

#11539

## c-kit (phospho-Tyr936) Antibody

**Catalog:** #11539-1 50µl **Orders:** [order@signalwayantibody.com](mailto:order@signalwayantibody.com)  
#11539-2 100µl **Support:** [tech@signalwayantibody.com](mailto:tech@signalwayantibody.com)  
**Storage:** Store at -20°C/1 year **Web:** [www.signalwayantibody.com](http://www.signalwayantibody.com)



Application	Species Reactivity	Source	Molecular Wt.
WB IHC	Human	Rabbit Polyconal Ab	120 145KD

**Description:** Antibodies were produced by immunizing rabbits with synthetic phosphopeptide and KLH conjugates. Antibodies were purified by affinity-chromatography using epitope-specific phosphopeptide. Non-phospho specific antibodies were removed by chromatography using non-phosphopeptide.

**Specificity:** The antibody detects endogenous level of c-kit only when phosphorylated at tyrosine 936.

**Immunogen:** Peptide sequence around phosphorylation site of tyrosine 936 (H-I-Y(p)-S-N) derived from Human c-Kit.

**Formulation:** Supplied at 1.0mg/mL in phosphate buffered saline (without Mg<sup>2+</sup> and Ca<sup>2+</sup>), pH 7.4, 150mM NaCl, 0.02% sodium azide and 50% glycerol.

**Synonyms:** KIT CD117 SCFR PBT

**Accession No.:** Swiss-Prot#:P10721 NCBI Gene#: 3815  
NCBI Protein#: NP\_000213.1

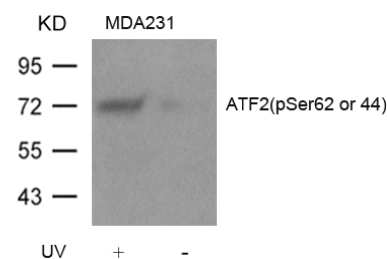
**Background:** This is the receptor for stem cell factor (mast cell growth factor). It has a tyrosine-protein kinase activity. Binding of the ligands leads to the autophosphorylation of KIT and its association with substrates such as phosphatidylinositol 3-kinase (Pi3K)

### References:

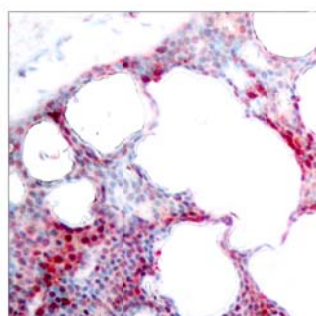
Martin, F.H. et al. (1990) Cell 63, 203-11.  
Blume-Jensen, P. et al. (2000) Nat Genet 24, 157-62.  
Gommerman, J.L. et al. (1997) J Biol Chem 272, 30519-25.  
Nocka, K. et al. (1990) EMBO J 9, 1805-13.

### Recommended Dilutions:

Western blotting 1:500~1:1000  
Immunohistochemistry 1:50~1:100



Western blot analysis of extracts from C6 cell untreated or treated with serum using c-kit (phospho-Tyr936) Antibody #11539.



Immunohistochemical analysis of paraffin-embedded human breast carcinoma tissue using c-kit (Phospho-Tyr936) Antibody #11539 (left) or the same antibody preincubated with blocking peptide (right).

### Citation:

If you publish research using #11539 please [let us know](#).

**Related Pathway:** Translation, Receptors

**Note:** For western blotting, incubate membrane with diluted antibody in 5% nonfat milk, 1X TBS, 0.1% Tween-20 at 4°C with gentle shaking, overnight.