

#11535

MARCKS (phospho-Ser170) Antibody

Catalog: #11535-1 50µl **Orders:** order@signalwayantibody.com
#11535-2 100µl **Support:** tech@signalwayantibody.com
Storage: Store at -20°C/1 year **Web:** www.signalwayantibody.com



Application	Species Reactivity	Source	Molecular Wt.
WB IHC	Human	Rabbit Polyconal Ab	80KD

Description: Antibodies were produced by immunizing rabbits with synthetic phosphopeptide and KLH conjugates. Antibodies were purified by affinity-chromatography using epitope-specific phosphopeptide. Non-phospho specific antibodies were removed by chromatography using non-phosphopeptide.

Specificity: The antibody detects endogenous level of MARCKS only when phosphorylated at threonine 170.

Immunogen: Peptide sequence around phosphorylation site of Serine 170 (G-F-S(p)-F-K) derived from Human MARCKS.

Formulation: Supplied at 1.0mg/mL in phosphate buffered saline (without Mg²⁺ and Ca²⁺), pH 7.4, 150mM NaCl, 0.02% sodium azide and 50% glycerol.

Synonyms: Protein kinase C substrate, 80 kDa protein, light chain

Accession No.: Swiss-Prot#: P29966 NCBI Gene#: 4082
NCBI Protein#: NP_002347.5

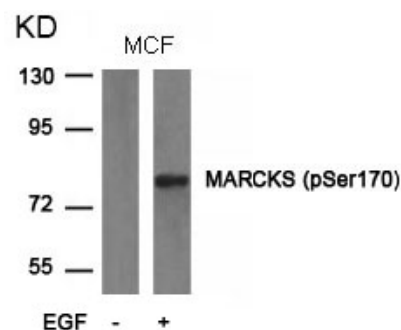
Background: MARCKS is the most prominent cellular substrate for protein kinase C. This protein binds calmodulin, actin, and synapsin. MARCKS is a filamentous (F) actin cross-linking protein.

References:

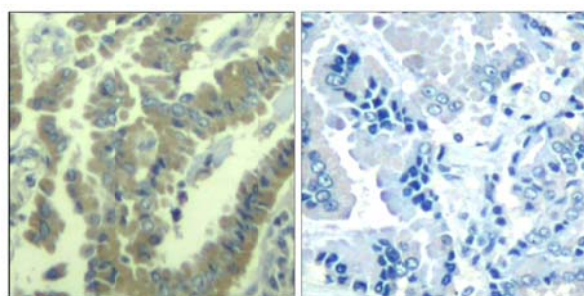
Ramsden, J.J. (2000) Int. J. Biochem. Cell Biol. 32, 475-479.
Graff, J. M. et al. (1989) J. Biol. Chem. 264, 21818-21823.
Hartwig, J. H. et al. (1992) Nature 356, 618-622.
Thelen, M. et al. (1991) Nature 351, 320-322.

Recommended Dilutions:

Western blotting 1:500~1:1000
Immunohistochemistry 1:50~1:100



Western blot analysis of extracts from MCF cells untreated or treated with EGF using MARCKS (phospho-Ser170) Antibody #11535.



Immunohistochemical analysis of paraffin-embedded human lung carcinoma tissue using MARCKS (Phospho-Ser170) Antibody #11535 (left) or the same antibody preincubated with blocking peptide (right).

Citation:

If you publish research using #11535 please [let us know](#).

Related Pathway: Cytoskeletal/Adhesion, Kinase/Phosphatases, Neuroscience

Note: For western blotting, incubate membrane with diluted antibody in 5% nonfat milk, 1X TBS, 0.1% Tween-20 at 4°C with gentle shaking, overnight.