

#11530

ABL1/2 (phospho-Tyr393/429) Antibody

Catalog: #11530-1 50µl **Orders:** order@signalwayantibody.com
#11530-2 100µl **Support:** tech@signalwayantibody.com
Storage: Store at -20°C/1 year **Web:** www.signalwayantibody.com



Application	Species Reactivity	Source	Molecular Wt.
WB IHC IF	Human Mouse	Rabbit Polyclonal Ab	210KD

Description: Antibodies were produced by immunizing rabbits with synthetic phosphopeptide and KLH conjugates. Antibodies were purified by affinity-chromatography using epitope-specific phosphopeptide. Non-phospho specific antibodies were removed by chromatography using non-phosphopeptide.

Specificity: The antibody detects endogenous level of ABL1/2 only when phosphorylated at tyrosine393/429.

Immunogen: Peptide sequence around phosphorylation site of tyrosine 393/429 (D-T-Y(p)-T-A) derived from Human ABL1/2.

Formulation: Supplied at 1.0mg/mL in phosphate buffered saline (without Mg²⁺ and Ca²⁺), pH 7.4, 150mM NaCl, 0.02% sodium azide and 50% glycerol.

Synonyms: Abelson murine leukemia viral oncogene homolog 1 c-ABL p150

Accession No.: Swiss-Prot#: P00519 P42684 NCBI Gene#: 25 27
NCBI Protein#: NP_005148.2 NP_001129472.1

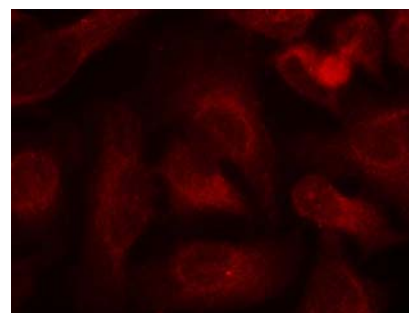
Background: Regulates cytoskeleton remodeling during cell differentiation, cell division and cell adhesion. Localizes to dynamic actin structures, and phosphorylates CRK and CRKL, DOK1, and other proteins controlling cytoskeleton dynamics. Regulates DNA repair potentially by activating the proapoptotic pathway when the DNA damage is too severe to be repaired. Phosphorylates PSMA7 that leads to an inhibition of proteasomal activity and cell cycle transition blocks.

References:

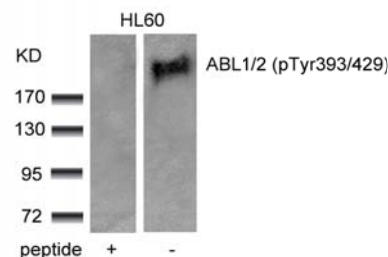
Wang, J.Y. et al. (2000) *Oncogene* 19, 5643-5650.
Danial, N.N. et al. (2000) *Oncogene* 19, 2523-2531.
Brasher, B.B. et al. (2000) *J. Biol. Chem.* 275, 35631-35637.
Pluk, H. et al. (2002) *Cell* 108, 247-259.

Recommended Dilutions:

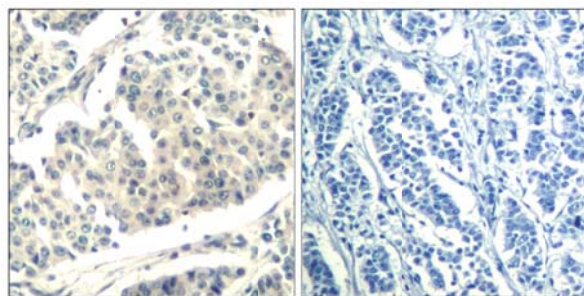
Western blotting 1:500~1:1000
Immunohistochemistry 1:50~1:100
Immunofluorescence 1:100~1:200



Immunofluorescence staining of methanol-fixed HeLa cells using ABL1/2 (phospho-Tyr393/429) Antibody #11530.



Western blot analysis of extracts from HL60 cells using ABL1/2 (phospho-Tyr393/429) Antibody #11530 and the same antibody preincubated with blocking peptide.



Immunohistochemical analysis of paraffin-embedded human breast carcinoma tissue using ABL1/2 (Phospho-Tyr393/429) Antibody #11530 (left) or the same antibody preincubated with blocking peptide (right).

Citation:

If you publish research using #11530 please [let us know](#).

Related Pathway: CellCycle, Kinase/Phosphatases

Note: For western blotting, incubate membrane with diluted antibody in 5% nonfat milk, 1X TBS, 0.1% Tween-20 at 4°C with gentle shaking, overnight.

This product is for in vitro research use only and is not intended for use in humans or animals.