

#11523

## PLC- $\gamma$ 1 (phospho-Tyr771) Antibody

**Catalog:** #11523-1 50 $\mu$ l **Orders:** [order@signalwayantibody.com](mailto:order@signalwayantibody.com)  
#11523-2 100 $\mu$ l **Support:** [tech@signalwayantibody.com](mailto:tech@signalwayantibody.com)  
**Storage:** Store at -20°C/1 year **Web:** [www.signalwayantibody.com](http://www.signalwayantibody.com)



Application	Species Reactivity	Source	Molecular Wt.
WB IF	Human Mouse Rat	Rabbit Polyconal Ab	155KD

**Description:** Antibodies were produced by immunizing rabbits with synthetic phosphopeptide and KLH conjugates. Antibodies were purified by affinity-chromatography using epitope-specific phosphopeptide. Non-phospho specific antibodies were removed by chromatography using non-phosphopeptide.

**Specificity:** The antibody detects endogenous level of PLC-gamma1 only when phosphorylated at tyrosine 771.

**Immunogen:** Peptide sequence around phosphorylation site of tyrosine 771 (P-D-Y(p)-G-A) derived from Human PLC- $\gamma$ 1.

**Formulation:** Supplied at 1.0mg/mL in phosphate buffered saline (without Mg<sup>2+</sup> and Ca<sup>2+</sup>), pH 7.4, 150mM NaCl, 0.02% sodium azide and 50% glycerol.

**Synonyms:** Phosphoinositide phospholipase C Phospholipase C-gamma-1

**Accession No.:** Swiss-Prot#: P19174 NCBI Gene#: 5335  
NCBI Protein#: NP\_002651.2

**Background:** PLC-gamma is a major substrate for heparin-binding growth factor 1 (acidic fibroblast growth factor)-activated tyrosine kinase.

### References:

Yue, C. et al. (1998) J. Biol. Chem. 273, 18023-18027.  
Margolis, B. et al. (1989) Cell 57, 1101-1107.  
Yue, C. et al. (2000) J. Biol. Chem. 275, 30220-30225.

### Citation:

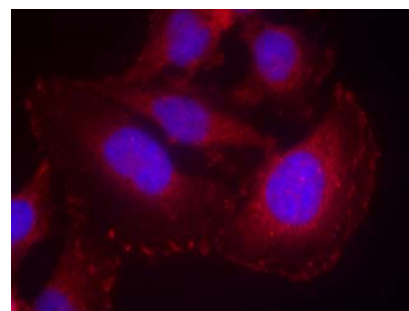
If you publish research using #11523 please [let us know](#).

**Related Pathway:** NF-kappa B, Kinase/Phosphatases, Neuroscience

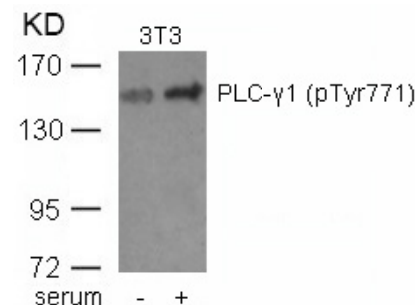
**Note:** For western blotting, incubate membrane with diluted antibody in 5% nonfat milk, 1X TBS, 0.1% Tween-20 at 4°C with gentle shaking, overnight.

### Recommended Dilutions:

Western blotting 1:500~1:1000  
Immunofluorescence 1:100~1:200



Immunofluorescence staining of methanol-fixed HeLa cells using PLC- $\gamma$ 1 (phospho-Tyr771) Antibody #11523.



Western blot analysis of extracts from 3T3 cells untreated or treated with serum using PLC- $\gamma$ 1 (phospho-Tyr771) Antibody #11523.