

#11519

Aurora A (phospho-Thr288) Antibody

Catalog: #11519-1 50µl **Orders:** order@signalwayantibody.com
#11519-2 100µl **Support:** tech@signalwayantibody.com
Storage: Store at -20°C/1 year **Web:** www.signalwayantibody.com



Application	Species Reactivity	Source	Molecular Wt.
IHC	Human Mouse	Rabbit Polyconal Ab	48KD

Description: Antibodies were produced by immunizing rabbits with synthetic phosphopeptide and KLH conjugates. Antibodies were purified by affinity-chromatography using epitope-specific phosphopeptide. Non-phospho specific antibodies were removed by chromatography using non-phosphopeptide.

Recommended Dilutions:

Immunohistochemistry 1:50~1:100

Specificity: The antibody detects endogenous level of Aurora A only when phosphorylated at threonine 288.

Immunogen: Peptide sequence around phosphorylation site of threonine 288 (R-T-T(p)-L-M) derived from Human Aurora A.

Formulation: Supplied at 1.0mg/mL in phosphate buffered saline (without Mg²⁺ and Ca²⁺), pH 7.4, 150mM NaCl, 0.02% sodium azide and 50% glycerol.

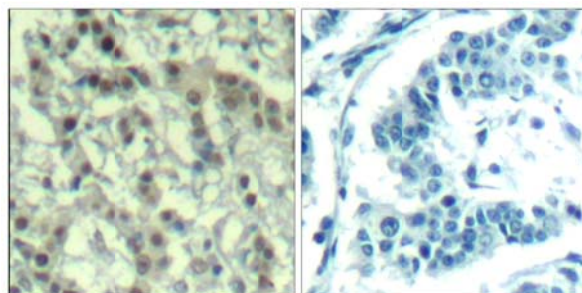
Synonyms: AIK ARK1 AURA BTAK STK6

Accession No.: Swiss-Prot#: O14965 NCBI Gene#: 6790
NCBI Protein#: NP_003591.2

Background: Contributes to the regulation of cell cycle progression. Required for normal mitosis. Associates with the centrosome and the spindle microtubules during mitosis and functions in centrosome maturation, spindle assembly, maintenance of spindle bipolarity, centrosome separation and mitotic checkpoint control. Phosphorylates numerous target proteins, including ARHGEF2, BRCA1, KIF2A, NDEL1, PARD3, PLK1 and BORA. Regulates KIF2A tubulin depolymerase activity By similarity. Required for normal axon formation. Plays a role in microtubule remodeling during neurite extension. Important for microtubule formation and/or stabilization.

References:

Bischoff, J.R. et al. (1998) EMBO J 17, 3052-65.
Hauf, S. et al. (2003) J Cell Biol 161, 281-94.
Walter, A.O. et al. (2000) Oncogene 19, 4906-16.
Zhou, H. et al. (1998) Nat Genet 20, 189-93.



Immunohistochemical analysis of paraffin-embedded human breast carcinoma tissue using Aurora A (Phospho-Thr288) Antibody #11519 (left) or the same antibody preincubated with blocking peptide (right).

Citation:

If you publish research using #11519 please [let us know](#).

Related Pathway: CellCycle, Kinase/Phosphatases

Note: For western blotting, incubate membrane with diluted antibody in 5% nonfat milk, 1X TBS, 0.1% Tween-20 at 4°C with gentle shaking, overnight.

This product is for in vitro research use only and is not intended for use in humans or animals.