

#11513

## eIF4B (phospho-Ser422) Antibody

**Catalog:** #11513-1 50µl **Orders:** [order@signalwayantibody.com](mailto:order@signalwayantibody.com)  
#11513-2 100µl **Support:** [tech@signalwayantibody.com](mailto:tech@signalwayantibody.com)  
**Storage:** Store at -20°C/1 year **Web:** [www.signalwayantibody.com](http://www.signalwayantibody.com)



Application	Species Reactivity	Source	Molecular Wt.
WB IHC	Human Mouse	Rabbit Polyconal Ab	80KD

**Description:** Antibodies were produced by immunizing rabbits with synthetic phosphopeptide and KLH conjugates. Antibodies were purified by affinity-chromatography using epitope-specific phosphopeptide. Non-phospho specific antibodies were removed by chromatography using non-phosphopeptide.

**Specificity:** The antibody detects endogenous level of eIF4B only when phosphorylated at Serine 422.

**Immunogen:** Peptide sequence around phosphorylation site of Serine 422 (T-G-S(p)-E-S) derived from Human eIF4B.

**Formulation:** Supplied at 1.0mg/mL in phosphate buffered saline (without Mg<sup>2+</sup> and Ca<sup>2+</sup>), pH 7.4, 150mM NaCl, 0.02% sodium azide and 50% glycerol.

### Synonyms:

**Accession No.:** Swiss-Prot#: P23588 NCBI Gene#: 1975  
NCBI Protein#: NP\_001408.2

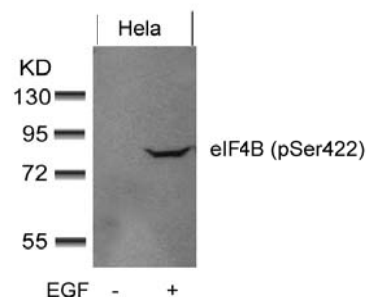
**Background:** Required for the binding of mRNA to ribosomes. Functions in close association with EIF4-F and EIF4-A. Binds near the 5'-terminal cap of mRNA in presence of EIF-4F and ATP. Promotes the ATPase activity and the ATP-dependent RNA unwinding activity of both EIF4-A and EIF4-F.

### References:

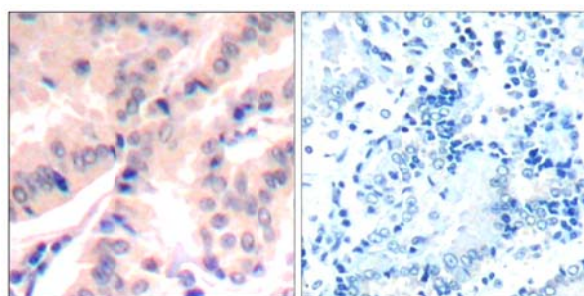
Gingras, A.C. et al. (2001) Genes Dev. 15, 807-826.  
Duncan, R. and Hershey, J.W. (1985) J. Biol. Chem. 260, 5493-5497.  
Duncan, R.F. and Hershey, J.W. (1989) J. Cell Biol. 109, 1467-1481.

### Recommended Dilutions:

Western blotting 1:500~1:1000  
Immunohistochemistry 1:50~1:100



Western blot analysis of extracts from HeLa cells untreated or treated with EGF using eIF4B (phospho-Ser422) Antibody #11513.



Immunohistochemical analysis of paraffin-embedded human lung carcinoma tissue using eIF4B (Phospho-Ser422) Antibody #11513 (left) or the same antibody preincubated with blocking peptide (right).

### Citation:

If you publish research using #11513 please [let us know](#).

**Related Pathway:** Akt, Translation

**Note:** For western blotting, incubate membrane with diluted antibody in 5% nonfat milk, 1X TBS, 0.1% Tween-20 at 4°C with gentle shaking, overnight.