

#11510

Her3/ErbB3 (phospho-Tyr1328) Antibody



Catalog: #11510-1 50µl **Orders:** order@signalwayantibody.com
#11510-2 100µl **Support:** tech@signalwayantibody.com
Storage: Store at -20°C/1 year **Web:** www.signalwayantibody.com

Application	Species Reactivity	Source	Molecular Wt.
WB IHC IF	Human Mouse Rat	Rabbit Polyclonal Ab	185KD

Description: Antibodies were produced by immunizing rabbits with synthetic phosphopeptide and KLH conjugates. Antibodies were purified by affinity-chromatography using epitope-specific phosphopeptide. Non-phospho specific antibodies were removed by chromatography using non-phosphopeptide.

Specificity: The antibody detects endogenous level of Her3/ErbB3 only when phosphorylated at tyrosine 1328.

Immunogen: Peptide sequence around phosphorylation site of tyrosine 1328 (P-D-Y(p)-W-H) derived from Human Her3/ErbB3.

Formulation: Supplied at 1.0mg/mL in phosphate buffered saline (without Mg²⁺ and Ca²⁺), pH 7.4, 150mM NaCl, 0.02% sodium azide and 50% glycerol.

Synonyms: Tyrosine kinase-type cell surface receptor HER3

Accession No.: Swiss-Prot#: P21860 NCBI Gene#: 2065
NCBI Protein#: NP_001005915.1

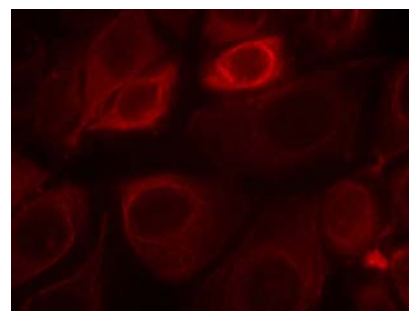
Background: Binds and is activated by neuregulins and NTAK.

References:

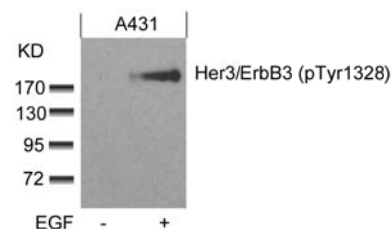
- Holbro, T. et al. (2003) Proc. Natl. Acad. Sci. USA 100, 8933-8938.
Kobayashi, M. et al. (2003) Oncogene 22, 1294-1301.
Kim, H.H. et al. (1994) J. Biol. Chem. 269, 24747-24755.
Yarden, Y. and Sliwkowski, M.X. (2001) Nature Rev. Mol. Cell. Biol. 2, 127-137.

Recommended Dilutions:

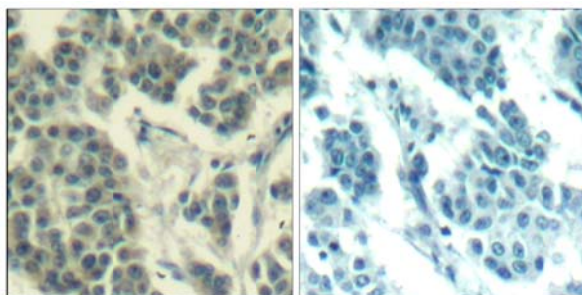
Western blotting 1:500~1:1000
Immunohistochemistry 1:50~1:100
Immunofluorescence 1:100~1:200



Immunofluorescence staining of methanol-fixed MCF7 cells using Her3/ErbB3 (phospho-Tyr1328) Antibody #11510.



Western blot analysis of extracts from A431 cells untreated or treated with EGF using Her3/ErbB3 (phospho-Tyr1328) Antibody #11510.



Immunohistochemical analysis of paraffin-embedded human breast carcinoma tissue using Her3/ErbB3 (Phospho-Tyr1328) Antibody #11510 (left) or the same antibody preincubated with blocking peptide (right).

Citation:

If you publish research using #11510 please [let us know](#).

Related Pathway: Receptors, Kinases/Phosphatases

Note: For western blotting, incubate membrane with diluted antibody in 5% nonfat milk, 1X TBS, 0.1% Tween-20 at 4°C with gentle shaking, overnight.

This product is for in vitro research use only and is not intended for use in humans or animals.