

#11508

PI3K P85 (phospho-Tyr467) Antibody

Catalog: #11508-1 50µl **Orders:** order@signalwayantibody.com
#11508-2 100µl **Support:** tech@signalwayantibody.com
Storage: Store at -20°C/1 year **Web:** www.signalwayantibody.com



Application	Species Reactivity	Source	Molecular Wt.
WB	Human Mouse Rat	Rabbit Polyconal Ab	85KD

Description: Antibodies were produced by immunizing rabbits with synthetic phosphopeptide and KLH conjugates. Antibodies were purified by affinity-chromatography using epitope-specific phosphopeptide. Non-phospho specific antibodies were removed by chromatography using non-phosphopeptide.

Specificity: The antibody detects endogenous level of total PI3K P85 only when phosphorylated at tyrosine 467.

Immunogen: Peptide sequence around phosphorylation site of tyrosine 467 (L-Y(p)-E-E-Y) derived from Human PI3K P85.

Formulation: Supplied at 1.0mg/mL in phosphate buffered saline (without Mg²⁺ and Ca²⁺), pH 7.4, 150mM NaCl, 0.02% sodium azide and 50% glycerol.

Synonyms: PI3-kinase p85 subunit alpha
PtdIns-3-kinase p85-alpha

Accession No.: Swiss-Prot#: P27986 Q92569 O00459 NCBI
Gene#: 5295
NCBI Protein#: NP_852556.2 NP_001107644.1 NP_005018.1

Background: Binds to activated (phosphorylated) protein-Tyr kinases, through its SH2 domain, and acts as an adapter, mediating the association of the p110 catalytic unit to the plasma membrane. Necessary for the insulin-stimulated increase in glucose uptake and glycogen synthesis in insulin-sensitive tissues. Binds to activated (phosphorylated) protein-tyrosine kinases through its SH2 domain and regulates their kinase activity. During insulin stimulation, it also binds to IRS-1./Binds to activated (phosphorylated) protein-tyrosine kinases, through its SH2 domain, and acts as an adapter, mediating the association of the p110 catalytic unit to the plasma membrane.

References:

Stoyanov, B. et al. (1995) Science 269, 690-3.
Simpson, L. and Parsons, R. (2001) Exp Cell Res 264, 29-41.
Neri, L.M. et al. (2002) Biochim Biophys Acta 1584, 73-80.

Citation:

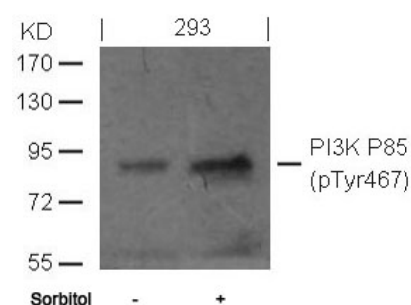
If you publish research using #11508 please [let us know](#).

Related Pathway: Akt

Note: For western blotting, incubate membrane with diluted antibody in 5% nonfat milk, 1X TBS, 0.1% Tween-20 at 4°C with gentle shaking, overnight.

Recommended Dilutions:

Western blotting 1:500~1:1000



Western blot analysis of extracts from 293 cells untreated or treated with sorbitol using PI3K P85 (phospho-Tyr467) Antibody #11508.