

#11507

## cofilin1/cofilin2 (phospho-Tyr88) Antibody



**Catalog:** #11507-1 50µl **Orders:** [order@signalwayantibody.com](mailto:order@signalwayantibody.com)  
#11507-2 100µl **Support:** [tech@signalwayantibody.com](mailto:tech@signalwayantibody.com)  
**Storage:** Store at -20°C/1 year **Web:** [www.signalwayantibody.com](http://www.signalwayantibody.com)

Application	Species Reactivity	Source	Molecular Wt.
IHC WB	Human Mouse	Rabbit Polyconal Ab	19KD

**Description:** Antibodies were produced by immunizing rabbits with synthetic phosphopeptide and KLH conjugates. Antibodies were purified by affinity-chromatography using epitope-specific phosphopeptide. Non-phospho specific antibodies were removed by chromatography using non-phosphopeptide.

**Specificity:** The antibody detects endogenous level of cofilin1/cofilin2 only when phosphorylated at tyrosine 88.

**Immunogen:** Peptide sequence around phosphorylation site of tyrosine 88 (A-T-Y(p)-E-T) derived from Human cofilin1/cofilin2.

**Formulation:** Supplied at 1.0mg/mL in phosphate buffered saline (without Mg<sup>2+</sup> and Ca<sup>2+</sup>), pH 7.4, 150mM NaCl, 0.02% sodium azide and 50% glycerol.

**Synonyms:** CFL1/CFL2

**Accession No.:** Swiss-Prot#: P23528 Q9Y281 NCBI Gene#: 1072 1073  
NCBI Protein#: NP\_005498.1 NP\_068733.1

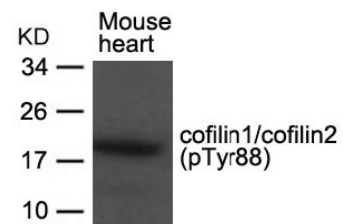
**Background:** Controls reversibly actin polymerization and depolymerization in a pH-sensitive manner. It has the ability to bind G- and F-actin in a 1:1 ratio of cofilin to actin. It is the major component of intranuclear and cytoplasmic actin rods.

### References:

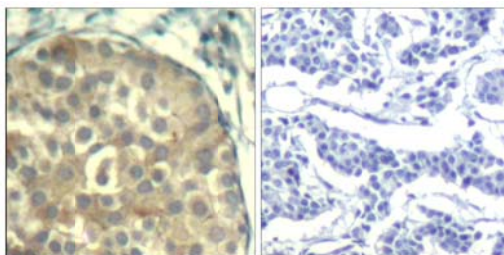
Carrier, M. et al. (1999) J. Biol. Chem. 274, 33827-33830.  
Arber, S. et al. (1998) Nature 393, 805-809.  
Yang, N. et al. (1998) Nature 393, 809-812.

### Recommended Dilutions:

Western blotting 1:500~1:1000  
Immunohistochemistry 1:50~1:100



Western blot analysis of extracts from Mouse heart tissue using cofilin1/cofilin2 (phospho-Tyr88) Antibody #11507.



Immunohistochemical analysis of paraffin-embedded human breast carcinoma tissue using cofilin1/cofilin2 (Phospho-Tyr88) Antibody #11507 (left) or the same antibody preincubated with blocking peptide (right).

### Citation:

If you publish research using #11507 please [let us know](#).

**Related Pathway:** Cytoskeletal/Adhesion

**Note:** For western blotting, incubate membrane with diluted antibody in 5% nonfat milk, 1X TBS, 0.1% Tween-20 at 4°C with gentle shaking, overnight.