

**#11330**

## $\alpha$ -catenin (Phospho-Ser641) Antibody

**Catalog:** #11330-1      50 $\mu$ l      **Orders:** [order@signalwayantibody.com](mailto:order@signalwayantibody.com)  
 #11330-2      100 $\mu$ l      **Support:** [tech@signalwayantibody.com](mailto:tech@signalwayantibody.com)  
**Storage:** Store at -20°C/1 year      **Web:** [www.signalwayantibody.com](http://www.signalwayantibody.com)



Application	Species Reactivity	Source	Molecular Wt.
WB	Human Mouse	Rabbit Polyconal Ab	100KD

**Description:** Antibodies were produced by immunizing rabbits with synthetic phosphopeptide and KLH conjugates. Antibodies were purified by affinity-chromatography using epitope-specific phosphopeptide. Non-phospho specific antibodies were removed by chromatography using non-phosphopeptide.

**Specificity:** The antibody detects endogenous level of  $\alpha$ -catenin only when phosphorylated at serine 641.

**Immunogen:** Peptide sequence around phosphorylation site of serine 641 (D-D-S(p)-D-F) derived from Human  $\alpha$ -catenin.

**Formulation:** Supplied at 1.0mg/mL in phosphate buffered saline (without Mg<sup>2+</sup> and Ca<sup>2+</sup>), pH 7.4, 150mM NaCl, 0.02% sodium azide and 50% glycerol.

**Synonyms:** Cadherin-associated protein  
Alpha E-catenin NY-REN-13 antigen

**Accession No.:** Swiss-Prot#: P35221      NCBI Gene#: 1495  
NCBI Protein#: NP\_001894.2

**Background:** Associates with the cytoplasmic domain of a variety of cadherins. The association of catenins to cadherins produces a complex which is linked to the actin filament network, and which seems to be of primary importance for cadherins cell-adhesion properties. May play a crucial role in cell differentiation.

### References:

Hwang, S.G. et al. (2005) J. Biol. Chem. 280, 12758-12765  
 Drees, F. et al. (2005) Cell 123, 903-915.  
 Yamada, S. et al. (2005) Cell 123, 889-901.  
 Kobiela, A. and Fuchs, E. (2004) Nat. Rev. Mol. Cell Biol. 5, 614-625.

### Citation:

Haitao Ji, Ji Wang, Heinz Nika, et al. EGF-Induced ERK Activation Promotes CK2-Mediated Disassociation of  $\alpha$ -Catenin from  $\beta$ -Catenin and Transactivation of  $\beta$ -Catenin. Molecular Cell, 36,547-559, (2009)

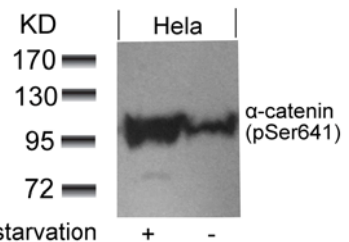
If you publish research using #11330 please [let us know](#).

**Related Pathway:** Wnt/beta-catenin

**Note:** For western blotting, incubate membrane with diluted antibody in 5% nonfat milk, 1X TBS, 0.1% Tween-20 at 4°C with gentle shaking, overnight.

### Recommended Dilutions:

Western blotting      1:500~1:1000



Western blot analysis of extracts from HeLa cells untreated or treated with starvation using  $\alpha$ -catenin (Phospho-Ser641) antibody #11330.