

#11323

Smad2 (Phospho-Thr220) Antibody



Catalog: #11323-1 50µl **Orders:** order@signalwayantibody.com
#11323-2 100µl **Support:** tech@signalwayantibody.com
Storage: Store at -20°C/1 year **Web:** www.signalwayantibody.com

Application	Species Reactivity	Source	Molecular Wt.
WB	Human Mouse Rat	Rabbit Polyclonal Ab	60KD

Description: Antibodies were produced by immunizing rabbits with synthetic phosphopeptide and KLH conjugates. Antibodies were purified by affinity-chromatography using epitope-specific phosphopeptide. Non-phospho specific antibodies were removed by chromatography using non-phosphopeptide.

Specificity: The antibody detects endogenous level of Smad2 only when phosphorylated at threonine 220.

Immunogen: Peptide sequence around phosphorylation site of threonine 220 (P-E-T(p)-P-P) derived from Human Smad2.

Formulation: Supplied at 1.0mg/mL in phosphate buffered saline (without Mg²⁺ and Ca²⁺), pH 7.4, 150mM NaCl, 0.02% sodium azide and 50% glycerol.

Synonyms: JV18-1 MADH2 MADR2 Mad-related protein 2 Mothers against DPP homolog 2

Accession No.: Swiss-Prot#: Q15796 NCBI Gene#: 4087
NCBI Protein#: NP_001003652.1

Background: Transcriptional modulator activated by TGF-beta and activin type 1 receptor kinase. SMAD2 is a receptor-regulated SMAD (R-SMAD). May act as a tumor suppressor in colorectal carcinoma.

References:

Sang Gyun Kim et al. (2004) Mol Biol Cell. February; 15(2): 420–434.
Rebecca A. Randall et al. (2004) Mol Cell Biol. February; 24(3): 1106–1121.
Kimberly A Brown et al. (2004) Breast Cancer Res.; 6(3): R215–R231.

Citation:

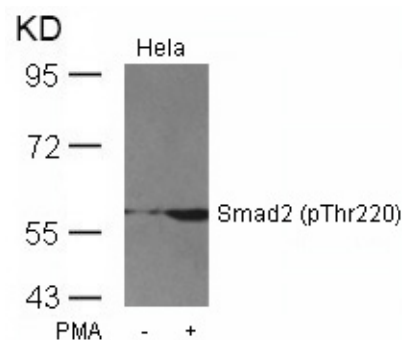
If you publish research using #11323 please [let us know](#).

Related Pathway: TGF-beta signaling

Note: For western blotting, incubate membrane with diluted antibody in 5% nonfat milk, 1X TBS, 0.1% Tween-20 at 4°C with gentle shaking, overnight.

Recommended Dilutions:

Western blotting 1:500~1:1000



Western blot analysis of extracts from HeLa cells untreated or treated with PMA using Smad2 (Phospho-Thr220) Antibody #11323.