

#11321

Smad1 (Phospho-Ser465) Antibody

Catalog: #11321-1 50µl **Orders:** order@signalwayantibody.com
#11321-2 100µl **Support:** tech@signalwayantibody.com
Storage: Store at -20°C/1 year **Web:** www.signalwayantibody.com



Application	Species Reactivity	Source	Molecular Wt.
WB	Human Mouse Rat	Rabbit Polyconal Ab	55KD

Description: Antibodies were produced by immunizing rabbits with synthetic phosphopeptide and KLH conjugates. Antibodies were purified by affinity-chromatography using epitope-specific phosphopeptide. Non-phospho specific antibodies were removed by chromatography using non-phosphopeptide.

Specificity: The antibody detects endogenous level of Smad1 only when phosphorylated at serine 465.

Immunogen: Peptide sequence around phosphorylation site of serine 465 (I-S-S-V-S(p)) derived from Human Smad1.

Formulation: Supplied at 1.0mg/mL in phosphate buffered saline (without Mg²⁺ and Ca²⁺), pH 7.4, 150mM NaCl, 0.02% sodium azide and 50% glycerol.

Synonyms: BSP-1 BSP1 Dwarf-A Dwf-A JV4-1

Accession No.: Swiss-Prot#: Q15797 NCBI Gene#: 4086
NCBI Protein#: NP_001003688.1

Background: Transcriptional modulator activated by BMP (bone morphogenetic proteins) type 1 receptor kinase. SMAD1 is a receptor-regulated SMAD (R-SMAD).

References:

Hiroaki Seto, et al. (2004) J Clin Invest. March 1; 113(5): 718–726
Linyu Li, et al. (2004) Mol Cell Biol. January; 24(2): 856–864.
Claire Nourry, et al. (2004) BMC Cell Biol. 5: 20

Citation:

Yamaguchi, J Zhu, T Yu, et al. Serum-free mouse embryo cells generate a self-sustaining feedback loop for an astrocyte marker protein and respond to cytokines and bisphenol A in accordance with the subtle difference in their differentiation state. Cell Biology International, 31(6),638-644,(2007)

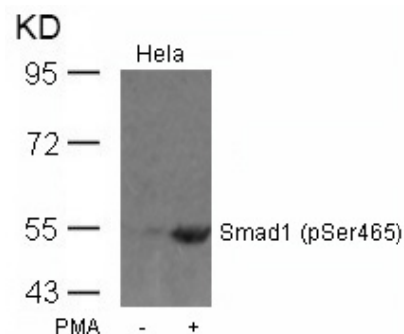
If you publish research using #11321 please [let us know](#).

Related Pathway: TGF-beta signaling

Note: For western blotting, incubate membrane with diluted antibody in 5% nonfat milk, 1X TBS, 0.1% Tween-20 at 4°C with gentle shaking, overnight.

Recommended Dilutions:

Western blotting 1:500~1:1000



Western blot analysis of extracts from HeLa cells untreated or treated with PMA using Smad1 (Phospho-Ser465) Antibody #11321.