

#11311

Myc (Phospho-Ser62) Antibody

Catalog: #11311-1 50µl **Orders:** order@signalwayantibody.com
#11311-2 100µl **Support:** tech@signalwayantibody.com
Storage: Store at -20°C/1 year **Web:** www.signalwayantibody.com



Application	Species Reactivity	Source	Molecular Wt.
IF	Human Mouse Rat	Rabbit Polyconal Ab	60KD

Description: Antibodies were produced by immunizing rabbits with synthetic phosphopeptide and KLH conjugates. Antibodies were purified by affinity-chromatography using epitope-specific phosphopeptide. Non-phospho specific antibodies were removed by chromatography using non-phosphopeptide.

Specificity: The antibody detects endogenous level of Myc only when phosphorylated at serine 62.

Immunogen: Peptide sequence around phosphorylation site of serine 62 (P-L-S(p)-P-S) derived from Human Myc.

Formulation: Supplied at 1.0mg/mL in phosphate buffered saline (without Mg²⁺ and Ca²⁺), pH 7.4, 150mM NaCl, 0.02% sodium azide and 50% glycerol.

Synonyms: c-myc

Accession No.: Swiss-Prot#: P01106 NCBI Gene#: 4609
NCBI Protein#: NP_002458.2

Background: Participates in the regulation of gene transcription. Binds DNA in a non-specific manner, yet also specifically recognizes the core sequence 5'-CAC[GA]TG-3'. Seems to activate the transcription of growth-related genes.

References:

Baudino T A, et al. (2001) Mol Cell Biol. 21: 691-702.
Blackwood E M, et al. (1991) Science. 251:1211-1217.
Henriksson M, et al. (1996) Adv Cancer Res. 68: 109-182.
Grandori C, et al. (2000) Annu Rev Cell Dev Biol. 16: 653-699.

Citation:

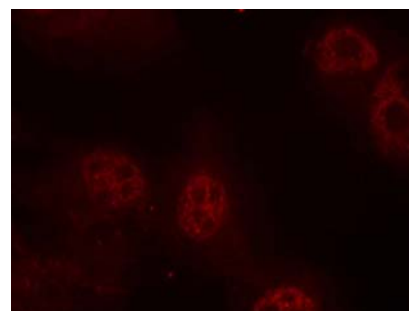
If you publish research using #11311 please [let us know](#).

Related Pathway: MAPK, CellCycle

Note: For western blotting, incubate membrane with diluted antibody in 5% nonfat milk, 1X TBS, 0.1% Tween-20 at 4°C with gentle shaking, overnight.

Recommended Dilutions:

Immunofluorescence 1:100~1:200



Immunofluorescence staining of methanol-fixed HeLa cells using Myc (Phospho-Ser62) Antibody #11311.