

**#11302**

## IGF-1R (Phospho-Tyr1280) Antibody

**Catalog:** #11302-1 50µl **Orders:** [order@signalwayantibody.com](mailto:order@signalwayantibody.com)  
 #11302-2 100µl **Support:** [tech@signalwayantibody.com](mailto:tech@signalwayantibody.com)  
**Storage:** Store at -20°C/1 year **Web:** [www.signalwayantibody.com](http://www.signalwayantibody.com)



Application	Species Reactivity	Source	Molecular Wt.
WB	Human, Mouse, Rat	Rabbit Polyconal Ab	200 95KD

**Description:** Antibodies were produced by immunizing rabbits with synthetic peptide and KLH conjugates. Antibodies were purified by affinity-chromatography using epitope-specific peptide.

**Recommended Dilutions:**

Western blotting 1:500~1:1000

**Specificity:** The antibody detects endogenous levels of IGF-1R only when phosphorylated at tyrosine 1280.

**Immunogen:** Peptide sequence around phosphorylation site of tyrosine 1280 (S-F-Y(p)-Y-S) derived from Human IGF-1R

**Formulation:** Supplied at 1.0mg/mL in phosphate buffered saline (without Mg<sup>2+</sup> and Ca<sup>2+</sup>), pH 7.4, 150mM NaCl, 0.02% sodium azide and 50% glycerol.

**Synonyms:** IGFR CD221 IGFI R

**Accession No.:** Swiss-Prot#:P08069 NCBI Gene#: 3480  
 NCBI Protein#: NP\_000866.1

**Background:** This receptor binds insulin-like growth factor 1 (IGF1) with a high affinity and IGF2 with a lower affinity. It has a tyrosine-protein kinase activity, which is necessary for the activation of the IGF1-stimulated downstream signaling cascade. When present in a hybrid receptor with INSR, binds IGF1. Ref.19 shows that hybrid receptors composed of IGF1R and INSR isoform Long are activated with a high affinity by IGF1, with low affinity by IGF2 and not significantly activated by insulin, and that hybrid receptors composed of IGF1R and INSR isoform Short are activated by IGF1, IGF2 and insulin. In contrast, Ref.21 shows that hybrid receptors composed of IGF1R and INSR isoform Long and hybrid receptors composed of IGF1R and INSR isoform Short have similar binding characteristics, both bind IGF1 and have a low affinity for insulin.

**References:**

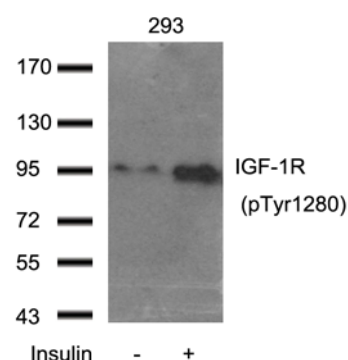
Adams, T.E. et al. (2000) Cell. Mol. Life Sci. 57, 1050-1093  
 Baserga, R. et al. (2000) Oncogene 19, 5574-5581  
 Scheidegger, K.J. et al. (2000) J. Biol. Chem. 275, 38921-38928.  
 O'Connor R, et al. Mol Cell Biol 1997 Jan; 17(1): 427-35

**Citation:**

If you publish research using #11302 please [let us know](#).

**Related Pathway:** Insulin/Glucose,Receptors, Kinases/Phosphatases

**Note:** For western blotting, incubate membrane with diluted antibody in 5% nonfat milk, 1X TBS, 0.1% Tween-20 at 4°C with gentle shaking, overnight.



Western blot analysis of extract from 293 cells using IGF-1R (Phospho-Tyr1280) Antibody #11302.