

#11301

GSK3 β (Phospho-Tyr216) Antibody

Catalog: #11301-1 50 μ l **Orders:** order@signalwayantibody.com
#11301-2 100 μ l **Support:** tech@signalwayantibody.com
Storage: Store at -20°C/1 year **Web:** www.signalwayantibody.com



Application	Species Reactivity	Source	Molecular Wt.
WB IHC IF	Human Mouse Rat	Rabbit Polyclonal Ab	46KD

Description: Antibodies were produced by immunizing rabbits with synthetic phosphopeptide and KLH conjugates. Antibodies were purified by affinity-chromatography using epitope-specific phosphopeptide. Non-phospho specific antibodies were removed by chromatography using non-phosphopeptide.

Specificity: The antibody detects endogenous level of GSK3 β only when phosphorylated at tyrosine 216.

Immunogen: Peptide sequence around phosphorylation site of tyrosine 216 (V-S-Y(p)-I-C) derived from Human GSK3 β .

Formulation: Supplied at 1.0mg/mL in phosphate buffered saline (without Mg²⁺ and Ca²⁺), pH 7.4, 150mM NaCl, 0.02% sodium azide and 50% glycerol.

Synonyms: Factor A GSK-3 alpha/beta kinase GSK3-alpha/beta

Accession No.: Swiss-Prot#: P49841 NCBI Gene#: 2932
NCBI Protein#: NP_001139628.1

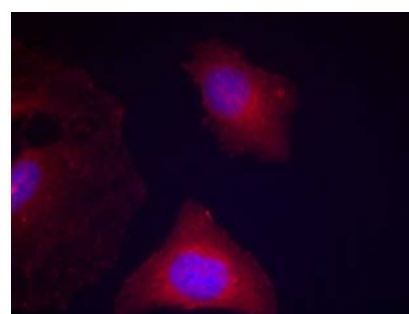
Background: Participates in the Wnt signaling pathway. Implicated in the hormonal control of several regulatory proteins including glycogen synthase, MYB and the transcription factor JUN. Phosphorylates JUN at sites proximal to its DNA-binding domain, thereby reducing its affinity for DNA. Phosphorylates MUC1 in breast cancer cells, and decreases the interaction of MUC1 with CTNNB1/beta-catenin. Phosphorylates CTNNB1/beta-catenin.

References:

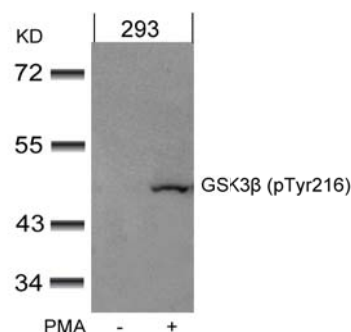
Chin PC, et al. Brain Res Mol Brain Res 2005 Jun 13; 137(1-2): 193-201
Takahashi-Yanaga F, et al. Biochem Biophys Res Commun 2004 Apr 02; 316(2): 411-415
Fan G, et al. J Biol Chem 2003 Dec 26; 278(52): 52432-52436
Liao X, et al. Mol Cancer Ther 2003 Nov; 2(11): 1215-1222

Recommended Dilutions:

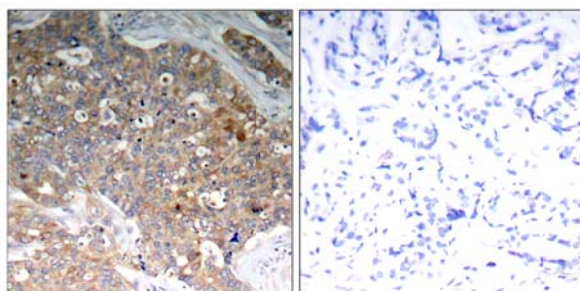
Western blotting 1:500~1:1000
Immunohistochemistry 1:50~1:100
Immunofluorescence 1:100~1:200



Immunofluorescence staining of methanol-fixed HeLa cells using GSK3 β (Phospho-Tyr216) Antibody #11301.



Western blot analysis of extracts from 293 cells untreated or treated with PMA using GSK3 β (Phospho-Tyr216) Antibody #11301.



Immunohistochemical analysis of paraffin-embedded human breast carcinoma tissue using GSK3 β (Phospho-Tyr216) Antibody #11301 (left) or the same antibody preincubated with blocking peptide (right).

Citation:

If you publish research using #11301 please [let us know](#).

Related Pathway: Akt, CellCycle, Insulin/Glucose, NF-kappa B, Kinase/Phosphatases, Wnt/beta-catenin, Translation

Note: For western blotting, incubate membrane with diluted antibody in 5% nonfat milk, 1X TBS, 0.1% Tween-20 at 4°C with gentle shaking, overnight.

This product is for in vitro research use only and is not intended for use in humans or animals.