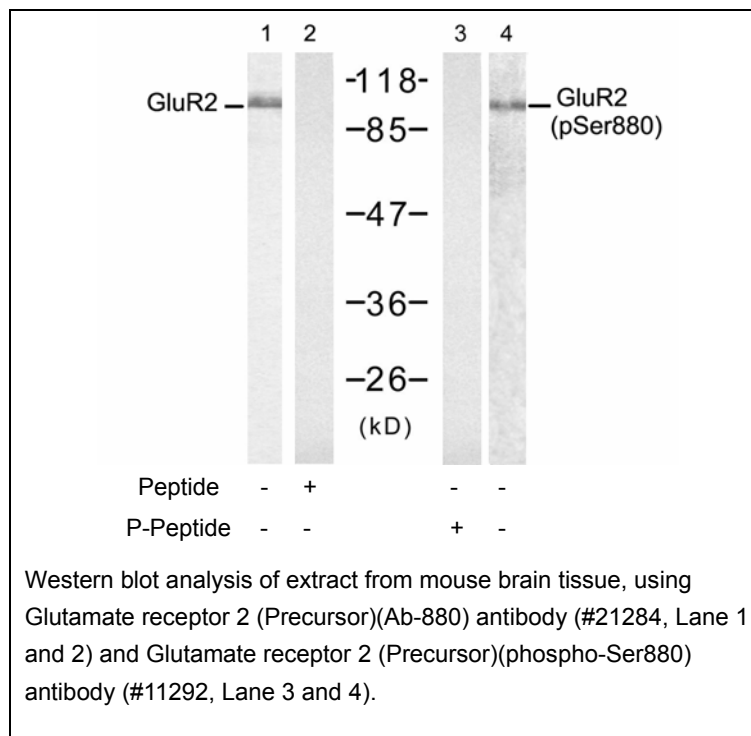




Glutamate receptor 2 (Precursor) (phospho-Ser880) antibody

#11292

- Catalog Number:** 11292-1, 11292-2
Amount: 50µg/50µl, 100µg/100µl
Swiss-Prot No. : P42262
Form of Antibody: Rabbit IgG in phosphate buffered saline (without Mg²⁺ and Ca²⁺), pH 7.4, 150mM NaCl, 0.02% sodium azide and 50% glycerol.
Storage/Stability: Store at -20°C/1 year
Immunogen: The antiserum was produced against synthesized phosphopeptide derived from human Glutamate receptor 2 (Precursor) around the phosphorylation site of serine 880 (I-E-S^P-V-K).
Purification: The antibody was affinity-purified from rabbit antiserum by affinity-chromatography using epitope-specific phosphopeptide. The antibody against non-phosphopeptide was removed by chromatography using non-phosphopeptide corresponding to the phosphorylation site.
Specificity/Sensitivity: Glutamate receptor 2 (Precursor)(phospho-Ser880) antibody detects endogenous levels of Glutamate receptor 2 (Precursor) only when phosphorylated at serine 880
Reactivity: Human, Mouse, Rat
Applications: WB: 1:500~1:1000
References: Cull-Candy, S. et al. (2006) *Curr. Opin. Neurobiol.* 16, 288-297.
Hanley JG, et al. (2002) *Neuron.* 34(1): 53-67



For Research Use Only