

#11291

Gab1 (Phospho-Tyr627) Antibody



Catalog: #11291-1 50µl **Orders:** order@signalwayantibody.com
#11291-2 100µl **Support:** tech@signalwayantibody.com
Storage: Store at -20°C/1 year **Web:** www.signalwayantibody.com

Application	Species Reactivity	Source	Molecular Wt.
WB IF	Human Mouse	Rabbit Polyconal Ab	110KD

Description: Antibodies were produced by immunizing rabbits with synthetic phosphopeptide and KLH conjugates. Antibodies were purified by affinity-chromatography using epitope-specific phosphopeptide. Non-phospho specific antibodies were removed by chromatography using non-phosphopeptide.

Specificity: The antibody detects endogenous level of Gab1 only when phosphorylated at tyrosine 627.

Immunogen: Peptide sequence around phosphorylation site of tyrosine 627 (V-E-Y(p)-L-D) derived from Human Gab1.

Formulation: Supplied at 1.0mg/mL in phosphate buffered saline (without Mg²⁺ and Ca²⁺), pH 7.4, 150mM NaCl, 0.02% sodium azide and 50% glycerol.

Synonyms: Growth factor receptor bound protein 2-associated protein 1

Accession No.: Swiss-Prot#: Q13480 NCBI Gene#: 2549
NCBI Protein#: NP_002030.2

Background: The protein encoded by Gab1 is a member of the IRS1-like multisubstrate docking protein family. It is an important mediator of branching tubulogenesis and plays a central role in cellular growth response, transformation and apoptosis. Two transcript variants encoding different isoforms have been found for this gene.

References:

Anders Kallin, et al. (2004) J. Biol. Chem ; 279: 17897 - 17904.
Hideto Kameda, et al. (2001) Cell Growth Differ ; 12: 307.
Masaki Osawa, et al. (2002) J. Cell Biol ; 158: 773.

Citation:

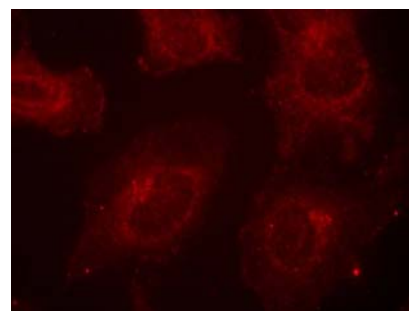
If you publish research using #11291 please [let us know](#).

Related Pathway: Akt, Insulin/Glucose, Adaptors

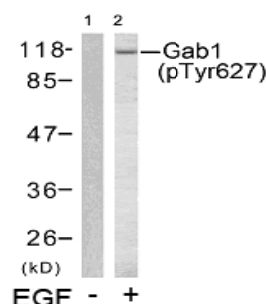
Note: For western blotting, incubate membrane with diluted antibody in 5% nonfat milk, 1X TBS, 0.1% Tween-20 at 4°C with gentle shaking, overnight.

Recommended Dilutions:

Western blotting 1:500~1:1000
Immunofluorescence 1:100~1:200



Immunofluorescence staining of methanol-fixed HeLa cells using Gab1(Phospho-Tyr627) Antibody #11291.



Western blot analysis of extracts from HUVEC cells untreated (lane 1) or treated with EGF (lane 2) using Gab1 (Phospho-Tyr627) Antibody #11291.