

#11281

GAP43 (Phospho-Ser41) Antibody

Catalog: #11281-1 50µl **Orders:** order@signalwayantibody.com
#11281-2 100µl **Support:** tech@signalwayantibody.com
Storage: Store at -20°C/1 year **Web:** www.signalwayantibody.com



Application	Species Reactivity	Source	Molecular Wt.
IF	Human Mouse Rat	Rabbit Polyclonal Ab	43KD

Description: Antibodies were produced by immunizing rabbits with synthetic phosphopeptide and KLH conjugates. Antibodies were purified by affinity-chromatography using epitope-specific phosphopeptide. Non-phospho specific antibodies were removed by chromatography using non-phosphopeptide.

Specificity: The antibody detects endogenous level of GAP43 only when phosphorylated at Ser41.

Immunogen: Peptide sequence around phosphorylation site of Ser41 (Q-A-S(p)-F-R) derived from Human GAP43.

Formulation: Supplied at 1.0mg/mL in phosphate buffered saline (without Mg²⁺ and Ca²⁺), pH 7.4, 150mM NaCl, 0.02% sodium azide and 50% glycerol.

Synonyms: B-50 BASP2 NEUM PP46 axonal membrane protein GAP-43

Accession No.: Swiss-Prot#: ?P17677 NCBI Gene#: 2596
NCBI Protein#: NP_001123536.1

Background: GAP43 encoded by this gene has been termed a 'growth' or 'plasticity' protein because it is expressed at high levels in neuronal growth cones during development and axonal regeneration. This protein is considered a crucial component of an effective regenerative response in the nervous system. Alternatively spliced transcript variants encoding distinct isoforms have been found for this gene.

References:

Rachael L. Neve, et.al. (1998) J. Neurosci; 18: 7757.
Yiping Shen, et.al. (2002) J. Neurosci; 22: 239.
Chantal Gamby, et.al. (1996) J. Biol. Chem; 271: 26698.

Citation:

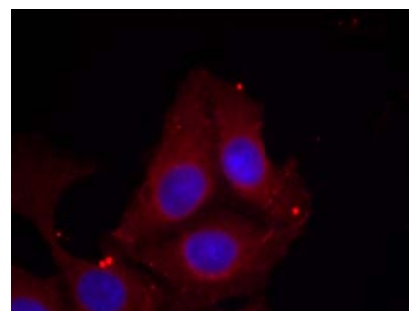
If you publish research using #11281 please [let us know](#).

Related Pathway: Neuroscience

Note: For western blotting, incubate membrane with diluted antibody in 5% nonfat milk, 1X TBS, 0.1% Tween-20 at 4°C with gentle shaking, overnight.

Recommended Dilutions:

Immunofluorescence 1:100~1:200



Immunofluorescence staining of methanol-fixed HeLa cells using GAP43 (Phospho-Ser41) Antibody #11281.