

#11270

## Tau (Phospho-Ser422) Antibody

**Catalog:** #11270-1      50µl      **Orders:** [order@signalwayantibody.com](mailto:order@signalwayantibody.com)  
#11270-2      100µl      **Support:** [tech@signalwayantibody.com](mailto:tech@signalwayantibody.com)  
**Storage:** Store at -20°C/1 year      **Web:** [www.signalwayantibody.com](http://www.signalwayantibody.com)



Application	Species Reactivity	Source	Molecular Wt.
WB	Human Mouse Rat	Rabbit Polyconal Ab	48 62 78KD

**Description:** Antibodies were produced by immunizing rabbits with synthetic phosphopeptide and KLH conjugates. Antibodies were purified by affinity-chromatography using epitope-specific phosphopeptide. Non-phospho specific antibodies were removed by chromatography using non-phosphopeptide.

**Specificity:** The antibody detects endogenous level of Tau only when phosphorylated at serine 422.

**Immunogen:** Peptide sequence around phosphorylation site of serine 422 (V-D-S(p)-P-Q) derived from Human Tau.

**Formulation:** Supplied at 1.0mg/mL in phosphate buffered saline (without Mg<sup>2+</sup> and Ca<sup>2+</sup>), pH 7.4, 150mM NaCl, 0.02% sodium azide and 50% glycerol.

**Synonyms:** MAPT    MTAPT    MTBT1    Neurofibrillary tangle protein  
PHF-tau

**Accession No.:** Swiss-Prot#: P10636      NCBI Gene#: 4137  
NCBI Protein#: NP\_001116538.1

**Background:** Promotes microtubule assembly and stability, and might be involved in the establishment and maintenance of neuronal polarity. The C-terminus binds axonal microtubules while the N-terminus binds neural plasma membrane components, suggesting that tau functions as a linker protein between both. Axonal polarity is predetermined by tau localization (in the neuronal cell) in the domain of the cell body defined by the centrosome. The short isoforms allow plasticity of the cytoskeleton whereas the longer isoforms may preferentially play a role in its stabilization.

### References:

Gong CX, et al. (2006) J Biomed Biotechnol. 2006: 31825  
Gamblin TC, et al. (2003) Proc Natl Acad Sci U S A. 2003 Aug 19; 100(17): 10032-10037  
Xu X., et al. (1997) Proc Natl Acad Sci U S A. Nov 11; 94(23): 12655-12660

### Citation:

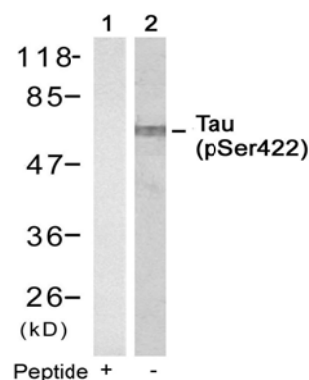
If you publish research using #11270 please [let us know](#).

**Related Pathway:** Neuroscience

**Note:** For western blotting, incubate membrane with diluted antibody in 5% nonfat milk, 1X TBS, 0.1% Tween-20 at 4°C with gentle shaking, overnight.

### Recommended Dilutions:

Western blotting      1:500~1:1000



Western blot analysis of extracts from mouse brain tissue using Tau (Phospho-Ser422) Antibody #11270 (Lane 2) and the same antibody preincubated with blocking peptide (Lane1).