

#11265

## MARCKS (Phospho-Ser162) Antibody



**Catalog:** #11265-1 50µl **Orders:** [order@signalwayantibody.com](mailto:order@signalwayantibody.com)  
#11265-2 100µl **Support:** [tech@signalwayantibody.com](mailto:tech@signalwayantibody.com)  
**Storage:** Store at -20°C/1 year **Web:** [www.signalwayantibody.com](http://www.signalwayantibody.com)

Application	Species Reactivity	Source	Molecular Wt.
WB IF	Human Mouse Rat	Rabbit Polyconal Ab	80KD

**Description:** Antibodies were produced by immunizing rabbits with synthetic phosphopeptide and KLH conjugates. Antibodies were purified by affinity-chromatography using epitope-specific phosphopeptide. Non-phospho specific antibodies were removed by chromatography using non-phosphopeptide.

**Specificity:** The antibody detects endogenous level of MARCKS only when phosphorylated at serine 162.

**Immunogen:** Peptide sequence around phosphorylation site of serine 162 (K-K-S(p)-F-K) derived from Human MARCKS.

**Formulation:** Supplied at 1.0mg/mL in phosphate buffered saline (without Mg<sup>2+</sup> and Ca<sup>2+</sup>), pH 7.4, 150mM NaCl, 0.02% sodium azide and 50% glycerol.

**Synonyms:** MACS MARCS PKCSL PRKCSL Protein kinase C substrate

**Accession No.:** Swiss-Prot#: P29966 NCBI Gene#: 4082  
NCBI Protein#: NP\_002347.5

**Background:** MARCKS is the most prominent cellular substrate for protein kinase C. This protein binds calmodulin, actin, and synapsin. MARCKS is a filamentous (F) actin cross-linking protein.

### References:

Pariser H, et al. Proc Natl Acad Sci U S A 2005 Aug 30; 102(35): 12407-12412  
Nagumo H, et al. Biochem Biophys Res Commun 2001 Jan 26; 280(3): 605-609  
Yamamoto H, et al. Arch Biochem Biophys 1998 Nov 15; 359(2): 151-159

### Citation:

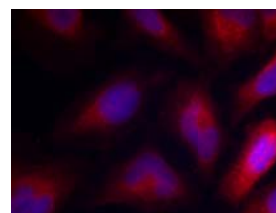
If you publish research using #11265 please [let us know](#).

**Related Pathway:** Cytoskeletal/Adhesion, Kinase/Phosphatases, Neuroscience

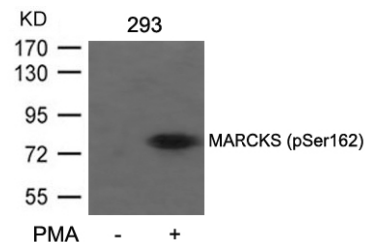
**Note:** For western blotting, incubate membrane with diluted antibody in 5% nonfat milk, 1X TBS, 0.1% Tween-20 at 4°C with gentle shaking, overnight.

### Recommended Dilutions:

Western blotting 1:500~1:1000  
Immunofluorescence 1:100~1:200



Immunofluorescence staining of methanol-fixed HeLa cells using MARCKS (Phospho-Ser162) Antibody #11265.



Western blot analysis of extracts from 293 cells untreated or treated with PMA using MARCKS (Phospho-Ser162) Antibody #11265.