

#11263

## HSF1 (phospho-Ser303) Antibody

**Catalog:** #11263-1 50µl **Orders:** [order@signalwayantibody.com](mailto:order@signalwayantibody.com)  
#11263-2 100µl **Support:** [tech@signalwayantibody.com](mailto:tech@signalwayantibody.com)  
**Storage:** Store at -20°C/1 year **Web:** [www.signalwayantibody.com](http://www.signalwayantibody.com)



Application	Species Reactivity	Source	Molecular Wt.
WB IHC	Human	Rabbit Polyconal Ab	82KD

**Description:** Antibodies were produced by immunizing rabbits with synthetic phosphopeptide and KLH conjugates. Antibodies were purified by affinity-chromatography using epitope-specific phosphopeptide. Non-phospho specific antibodies were removed by chromatography using non-phosphopeptide.

**Specificity:** The antibody detects endogenous level of HSF1 only when phosphorylated at serine 303.

**Immunogen:** Peptide sequence around phosphorylation site of serine 303 (P-P-S(p)-P-P) derived from Human HSF1.

**Formulation:** Supplied at 1.0mg/mL in phosphate buffered saline (without Mg<sup>2+</sup> and Ca<sup>2+</sup>), pH 7.4, 150mM NaCl, 0.02% sodium azide and 50% glycerol.

**Synonyms:** HSTF 1

**Accession No.:** Swiss-Prot#: Q00613 NCBI Gene#: 3297  
NCBI Protein#: NP\_005517.1

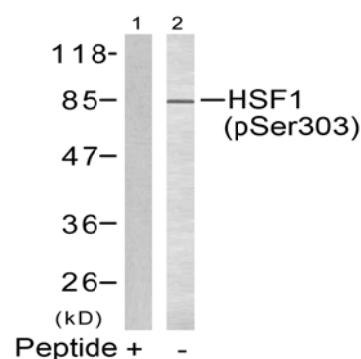
**Background:** DNA-binding protein that specifically binds heat shock promoter elements (HSE) and activates transcription. In higher eukaryotes, HSF is unable to bind to the HSE unless the cells are heat shocked.

### References:

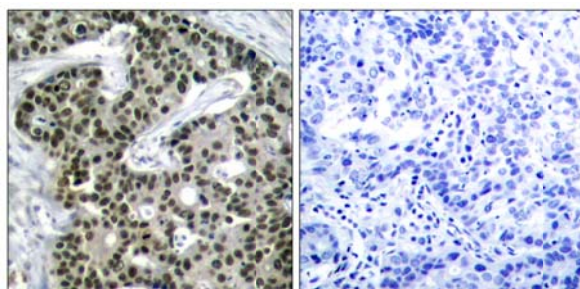
Parvaneh Rafiee, et.al. (2006) Am J Physiol Cell Physiol ; 291: C931 - C945  
Fumika Shinozaki, et.al. (2006) J. Biol. Chem ; 281: 16361 - 16369.  
Eiichi Takaki, et.al. (2006) J. Biol. Chem ; 281: 4931 - 4937.  
Jan-Jong Hung, et.al. (1998) J. Biol. Chem ; 273: 31924.

### Recommended Dilutions:

Western blotting 1:500~1:1000  
Immunohistochemistry 1:50~1:100



Western blot analysis of extracts from MCF7 cells using HSF1 (phospho-Ser303) Antibody #11263 (Lane 2) and the same antibody preincubated with blocking peptide (Lane1).



Immunohistochemical analysis of paraffin-embedded human breast carcinoma tissue using HSF1 (Phospho-Ser303) Antibody #11263 (left) or the same antibody preincubated with blocking peptide (right).

### Citation:

If you publish research using #11263 please [let us know](#).

**Related Pathway:** MAPK, Chromatin/Transcription

**Note:** For western blotting, incubate membrane with diluted antibody in 5% nonfat milk, 1X TBS, 0.1% Tween-20 at 4°C with gentle shaking, overnight.