

#11261

GluR1 (phospho-Ser849) Antibody

Catalog: #11261-1 50µl **Orders:** order@signalwayantibody.com
#11261-2 100µl **Support:** tech@signalwayantibody.com
Storage: Store at -20°C/1 year **Web:** www.signalwayantibody.com



Application	Species Reactivity	Source	Molecular Wt.
WB	Human Mouse Rat	Rabbit Polyconal Ab	110KD

Description: Antibodies were produced by immunizing rabbits with synthetic phosphopeptide and KLH conjugates. Antibodies were purified by affinity-chromatography using epitope-specific phosphopeptide. Non-phospho specific antibodies were removed by chromatography using non-phosphopeptide.

Specificity: The antibody detects endogenous level of GluR1 only when phosphorylated at serine 849.

Immunogen: Peptide sequence around phosphorylation site of serine 849 (Q-Q-S(p)-I-N) derived from Human GluR1.

Formulation: Supplied at 1.0mg/mL in phosphate buffered saline (without Mg²⁺ and Ca²⁺), pH 7.4, 150mM NaCl, 0.02% sodium azide and 50% glycerol.

Synonyms: GLR1 GLUH1 GRIA1 GluR-1 GluR-A

Accession No.: Swiss-Prot#: P42261 NCBI Gene#: 2890
NCBI Protein#: NP_000818.2

Background: Glutamate receptors are the predominant excitatory neurotransmitter receptors in the mammalian brain and are activated in a variety of normal neurophysiologic processes. These receptors are heteromeric protein complexes with multiple subunits, each possessing transmembrane regions, and all arranged to form a ligand-gated ion channel. The classification of glutamate receptors is based on their activation by different pharmacologic agonists. This gene belongs to a family of alpha-amino-3-hydroxy-5-methyl-4-isoxazole propionate (AMPA) receptors. Alternatively spliced transcript variants encoding different isoforms have been found for this gene.

References:

Emamian ES, et al. (2004) J Neurosci. 24(7): 1561-4
Palmer, C.L. et al. (2005) Pharmacol. Rev. 57, 253-277.

Citation:

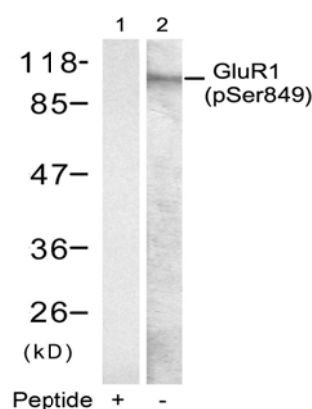
If you publish research using #11261 please [let us know](#).

Related Pathway: Receptors, Neuroscience, Channel

Note: For western blotting, incubate membrane with diluted antibody in 5% nonfat milk, 1X TBS, 0.1% Tween-20 at 4°C with gentle shaking, overnight.

Recommended Dilutions:

Western blotting 1:500~1:1000



Western blot analysis of extracts from mouse brain tissue using GluR1 (phospho-Ser849) Antibody #11261 (Lane 2) and the same antibody preincubated with blocking peptide (Lane1).