

#11257

Tau (Phospho-Thr212) Antibody

Catalog: #11257-1 50µl **Orders:** order@signalwayantibody.com
#11257-2 100µl **Support:** tech@signalwayantibody.com
Storage: Store at -20°C/1 year **Web:** www.signalwayantibody.com



Application	Species Reactivity	Source	Molecular Wt.
WB	Human Mouse Rat	Rabbit Polyconal Ab	48 62 78KD

Description: Antibodies were produced by immunizing rabbits with synthetic phosphopeptide and KLH conjugates. Antibodies were purified by affinity-chromatography using epitope-specific phosphopeptide. Non-phospho specific antibodies were removed by chromatography using non-phosphopeptide.

Specificity: The antibody detects endogenous level of Tau only when phosphorylated at threonine 212.

Immunogen: Peptide sequence around phosphorylation site of threonine 212 (S-R-T(p)-P-S) derived from Human Tau.

Formulation: Supplied at 1.0mg/mL in phosphate buffered saline (without Mg²⁺ and Ca²⁺), pH 7.4, 150mM NaCl, 0.02% sodium azide and 50% glycerol.

Synonyms: MAPT MTAPT MTBT1 Neurofibrillary tangle protein PHF-tau

Accession No.: Swiss-Prot#: P10636 NCBI Gene#: 4137
NCBI Protein#: NP_001116538.1

Background: Promotes microtubule assembly and stability, and might be involved in the establishment and maintenance of neuronal polarity. The C-terminus binds axonal microtubules while the N-terminus binds neural plasma membrane components, suggesting that tau functions as a linker protein between both. Axonal polarity is predetermined by tau localization (in the neuronal cell) in the domain of the cell body defined by the centrosome. The short isoforms allow plasticity of the cytoskeleton whereas the longer isoforms may preferentially play a role in its stabilization.

References:

Gong CX, et al. (2006) J Biomed Biotechnol. 2006: 31825
Zheng-Fischh?fer Q, et al. (1998) Eur J Biochem. 252:542-552
Illenberger S, et al. (1998) Mol Biol Cell. Jun; 9(6): 1495-1512

Citation:

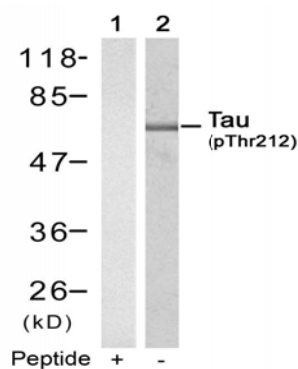
If you publish research using #11257 please [let us know](#).

Related Pathway: Neuroscience

Note: For western blotting, incubate membrane with diluted antibody in 5% nonfat milk, 1X TBS, 0.1% Tween-20 at 4°C with gentle shaking, overnight.

Recommended Dilutions:

Western blotting 1:500~1:1000



Western blot analysis of extracts from mouse brain tissue using Tau (Phospho-Thr212) Antibody #11257 (Lane 2) and the same antibody preincubated with blocking peptide (Lane1).