

#11256

α -Synuclein (Phospho-Tyr125) Antibody



Catalog: #11256-1 50 μ l Orders: order@signalwayantibody.com

#11256-2 100 μ l Support: tech@signalwayantibody.com

Storage: Store at -20°C/1 year Web: www.signalwayantibody.com

Application	Species Reactivity	Source	Molecular Wt.
WB IF	Human	Rabbit Polyclonal Ab	18KD

Description: Antibodies were produced by immunizing rabbits with synthetic phosphopeptide and KLH conjugates. Antibodies were purified by affinity-chromatography using epitope-specific phosphopeptide. Non-phospho specific antibodies were removed by chromatography using non-phosphopeptide.

Specificity: The antibody detects endogenous level of α -Synuclein only when phosphorylated at tyrosine 125.

Immunogen: Peptide sequence around phosphorylation site of tyrosine 125 (E-A-Y(p)-E-M) derived from Human α -Synuclein.

Formulation: Supplied at 1.0mg/mL in phosphate buffered saline (without Mg²⁺ and Ca²⁺), pH 7.4, 150mM NaCl, 0.02% sodium azide and 50% glycerol.

Synonyms: NACP SYN SYUA alpha-synuclein

Accession No.: Swiss-Prot#: P37840 NCBI Gene#: 6622
NCBI Protein#: NP_000336.1

Background: SncA is a member of the synuclein family of structurally related proteins that are prominently expressed in the central nervous system, which also includes beta- and gamma-synuclein. Synucleins are abundantly expressed in the brain and SncA and Snc-Beta inhibit phospholipase D2 selectively. SncA may serve to integrate presynaptic signaling and membrane trafficking. Aggregated SncA proteins form brain lesions that are hallmarks of neurodegenerative synucleinopathies. Defects in SncA play a role in the pathogenesis of Parkinson disease. SncA peptides are a major component of amyloid plaques in the brains of patients with Alzheimer disease. SncA shares 95% sequence homology with rat SncA. Rat SncA is specifically expressed in brain and is associated with synaptosomal membranes in neurons

References:

Takahashi T, et al. J Biol Chem 2003 Oct 24; 278(43): 42225-33
Ahn BH, et al. J Biol Chem 2002 Apr 05; 277(14): 12334-42
Negro A, et al. FASEB J 2002 Feb; 16(2): 210-2
Goldberg, et al. Nat. Cell Biol. 2000; 2, 115-119.

Citation:

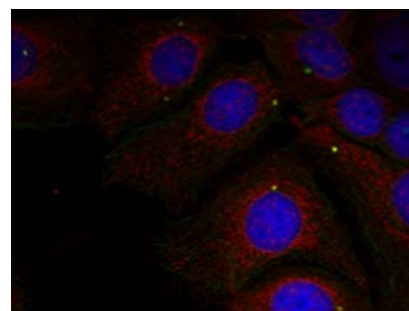
If you publish research using #11256 please [let us know](#).

Related Pathway: Neuroscience

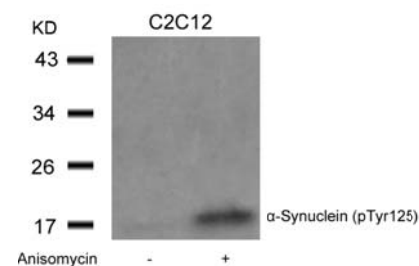
Note: For western blotting, incubate membrane with diluted antibody in 5% nonfat milk, 1X TBS, 0.1% Tween-20 at 4°C with gentle shaking, overnight.

Recommended Dilutions:

Western blotting 1:500~1:1000
Immunofluorescence 1:100~1:200



Immunofluorescence staining of methanol-fixed HeLa cells using α -Synuclein (Phospho-Tyr125) Antibody #11256.



Western blot analysis of extracts from C2C12 cells untreated or treated with Anisomycin using α -Synuclein (Phospho-Tyr125) Antibody #11256.