

#11248

## HSP27 (Phospho-Ser82) Antibody

Catalog: #11248-1 50µl Orders: [order@signalwayantibody.com](mailto:order@signalwayantibody.com)  
#11248-2 100µl Support: [tech@signalwayantibody.com](mailto:tech@signalwayantibody.com)  
Storage: Store at -20°C/1 year Web: [www.signalwayantibody.com](http://www.signalwayantibody.com)



Application	Species Reactivity	Source	Molecular Wt.
WB IHC	Human	Rabbit Polyconal Ab	27KD

**Description:** Antibodies were produced by immunizing rabbits with synthetic phosphopeptide and KLH conjugates. Antibodies were purified by affinity-chromatography using epitope-specific phosphopeptide. Non-phospho specific antibodies were removed by chromatography using non-phosphopeptide.

**Specificity:** The antibody detects endogenous level of HSP27 only when phosphorylated at serine 82.

**Immunogen:** Peptide sequence around phosphorylation site of serine 82 (Q-L-S(p)-S-G) derived from Human HSP27.

**Formulation:** Supplied at 1.0mg/mL in phosphate buffered saline (without Mg<sup>2+</sup> and Ca<sup>2+</sup>), pH 7.4, 150mM NaCl, 0.02% sodium azide and 50% glycerol.

**Synonyms:** 28 kDa heat shock protein Estrogen-regulated 24 kDa protein  
Growth-related 25 kDa protein HSP 27 HSP25

**Accession No.:** Swiss-Prot#: P04792 NCBI Gene#: 3315  
NCBI Protein#: NP\_001531.1

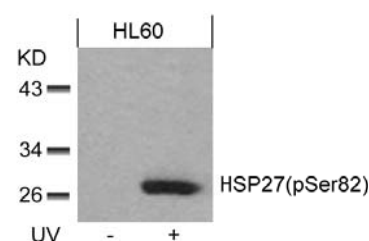
**Background:** Involved in stress resistance and actin organization.

### References:

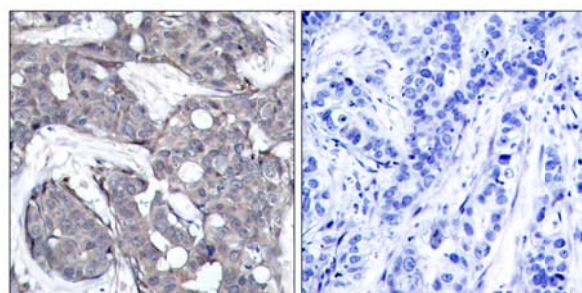
White MY, et al. (2006) J Mol Cell Cardiol. 40(6): 761-74  
Xiankui Sun, et al. (2006) Cell Stress Chaperones. 11(1): 61-70  
Matthias Meier; et al. (2001) Hypertension. 38:1260  
Ali Dana, et al. (2000) Circulation Research. 86: 989

### Recommended Dilutions:

Western blotting 1:500~1:1000  
Immunohistochemistry 1:50~1:100



Western blot analysis of extracts from HL60 cells untreated or treated with UV using HSP27 (Phospho-Ser82) Antibody #11248.



Immunohistochemical analysis of paraffin-embedded human breast carcinoma tissue using HSP27 (Phospho-Ser82) Antibody #11248 (left) or the same antibody preincubated with blocking peptide (right).

### Citation:

If you publish research using #11248 please [let us know](#).

**Related Pathway:** MAPK, Cancer/Apoptosis

**Note:** For western blotting, incubate membrane with diluted antibody in 5% nonfat milk, 1X TBS, 0.1% Tween-20 at 4°C with gentle shaking, overnight.