

#11247

HSP27 (Phospho-Ser78) Antibody

Catalog: #11247-1 50µl Orders: order@signalwayantibody.com
#11247-2 100µl Support: tech@signalwayantibody.com
Storage: Store at -20°C/1 year Web: www.signalwayantibody.com



Application	Species Reactivity	Source	Molecular Wt.
WB IHC IF	Human	Rabbit Polyconal Ab	27KD

Description: Antibodies were produced by immunizing rabbits with synthetic phosphopeptide and KLH conjugates. Antibodies were purified by affinity-chromatography using epitope-specific phosphopeptide. Non-phospho specific antibodies were removed by chromatography using non-phosphopeptide.

Specificity: The antibody detects endogenous level of HSP27 only when phosphorylated at serine 78.

Immunogen: Peptide sequence around phosphorylation site of serine 78 (A-L-S(p)-R-Q) derived from Human HSP27.

Formulation: Supplied at 1.0mg/mL in phosphate buffered saline (without Mg²⁺ and Ca²⁺), pH 7.4, 150mM NaCl, 0.02% sodium azide and 50% glycerol.

Synonyms: 28 kDa heat shock protein Estrogen-regulated 24 kDa protein
Growth-related 25 kDa protein HSP 27 HSP25

Accession No.: Swiss-Prot#: P04792 NCBI Gene#: 3315
NCBI Protein#: NP_001531.1

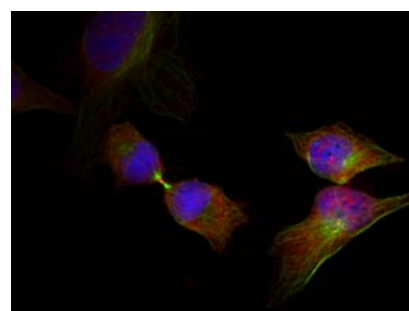
Background: Involved in stress resistance and actin organization.

References:

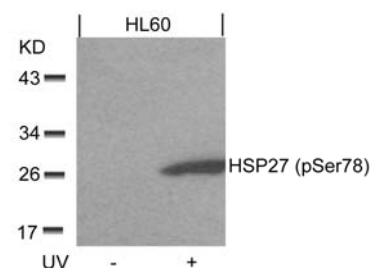
J Landry, et al. (1992) J. Biol. Chem., Vol. 267, Issue 2: 794-803
Sita Somara, et al. (2004) Am J Physiol Cell Physiol 286: C1290-C1301
Catherine Gaitanaki, et al. (2003) Experimental Biology 206, 2759-2769 (2003)
Jing Dong, et al. (2004) Am J Physiol Renal Physiol 287: F1049-F1058

Recommended Dilutions:

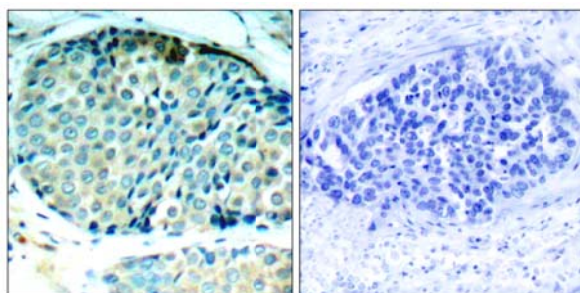
Western blotting 1:500~1:1000
Immunohistochemistry 1:50~1:100
Immunofluorescence 1:100~1:200



Immunofluorescence staining of methanol-fixed HeLa cells showing cytoplasmic, nuclear, centrosomal, midbody staining using HSP27 (Phospho-Ser78) Antibody #11247.



Western blot analysis of extracts from HL60 cells untreated or treated with UV using HSP27 (Phospho-Ser78) Antibody #11247.



Immunohistochemical analysis of paraffin-embedded human breast carcinoma tissue using HSP27 (Phospho-Ser78) Antibody #11247 (left) or the same antibody preincubated with blocking peptide (right).

Citation:

If you publish research using #11247 please [let us know](#).

Related Pathway: MAPK, Cancer/Apoptosis

Note: For western blotting, incubate membrane with diluted antibody in 5% nonfat milk, 1X TBS, 0.1% Tween-20 at 4°C with gentle shaking, overnight.

This product is for in vitro research use only and is not intended for use in humans or animals.