

#11231

IRS-1 (Phospho-Ser639) Antibody

Catalog: #11231-1 50µl **Orders:** order@signalwayantibody.com
#11231-2 100µl **Support:** tech@signalwayantibody.com
Storage: Store at -20°C/1 year **Web:** www.signalwayantibody.com



Application	Species Reactivity	Source	Molecular Wt.
WB IHC	Human Mouse Rat	Rabbit Polyconal Ab	180KD

Description: Antibodies were produced by immunizing rabbits with synthetic phosphopeptide and KLH conjugates. Antibodies were purified by affinity-chromatography using epitope-specific phosphopeptide. Non-phospho specific antibodies were removed by chromatography using non-phosphopeptide.

Specificity: The antibody detects endogenous level of IRS-1 only when phosphorylated at serine 639.

Immunogen: Peptide sequence around phosphorylation site of serine 639 (P-K-S(p)-V-S) derived from Human IRS-1.

Formulation: Supplied at 1.0mg/mL in phosphate buffered saline (without Mg²⁺ and Ca²⁺), pH 7.4, 150mM NaCl, 0.02% sodium azide and 50% glycerol.

Synonyms: IRS-1 IRS1

Accession No.: Swiss-Prot#: P35568 NCBI Gene#: 3667
NCBI Protein#: NP_005535.1

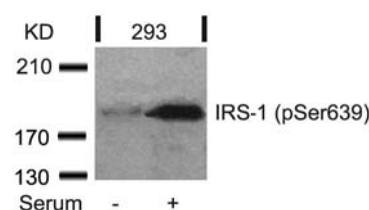
Background: May mediate the control of various cellular processes by insulin. When phosphorylated by the insulin receptor binds specifically to various cellular proteins containing SH2 domains such as phosphatidylinositol 3-kinase p85 subunit or GRB2. Activates phosphatidylinositol 3-kinase when bound to the regulatory p85 subunit

References:

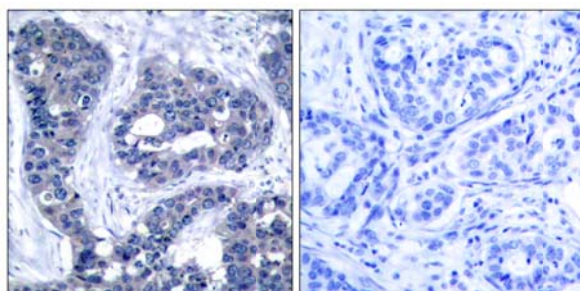
Ozes ON, et al. (2001) Proc Natl Acad Sci U S A; 98(8): 4640-4645
Tzatsos A, et al. (2006) Mol Cell Biol; 26(1): 63-76
Steppan CM, et al. (2005) Mol Cell Biol; 25(4): 1569-1575
Batty IH, et al. (2004) Biochem J; 379(Pt 3): 641-651

Recommended Dilutions:

Western blotting 1:500~1:1000
Immunohistochemistry 1:50~1:100



Western blot analysis of extracts from 293 cells untreated or treated with serum using IRS-1 (Phospho-Ser639) Antibody #11231.



Immunohistochemical analysis of paraffin-embedded human breast carcinoma tissue using IRS-1 (Phospho-Ser639) Antibody #11231 (left) or the same antibody preincubated with blocking peptide (right).

Citation:

If you publish research using #11231 please [let us know](#).

Related Pathway: Akt, MAPK, Insulin/Glucose

Note: For western blotting, incubate membrane with diluted antibody in 5% nonfat milk, 1X TBS, 0.1% Tween-20 at 4°C with gentle shaking, overnight.