

#11230

## IRS-1 (Phospho-Ser636) Antibody

**Catalog:** #11230-1 50µl **Orders:** [order@signalwayantibody.com](mailto:order@signalwayantibody.com)  
#11230-2 100µl **Support:** [tech@signalwayantibody.com](mailto:tech@signalwayantibody.com)  
**Storage:** Store at -20°C/1 year **Web:** [www.signalwayantibody.com](http://www.signalwayantibody.com)



Application	Species Reactivity	Source	Molecular Wt.
WB IHC	Human Mouse Rat	Rabbit Polyconal Ab	180KD

**Description:** Antibodies were produced by immunizing rabbits with synthetic phosphopeptide and KLH conjugates. Antibodies were purified by affinity-chromatography using epitope-specific phosphopeptide. Non-phospho specific antibodies were removed by chromatography using non-phosphopeptide.

**Specificity:** The antibody detects endogenous level of total IRS-1 protein.

**Immunogen:** Peptide sequence around phosphorylation site of serine 636 (P-M-S(p)-P-K) derived from Human IRS-1.

**Formulation:** Supplied at 1.0mg/mL in phosphate buffered saline (without Mg<sup>2+</sup> and Ca<sup>2+</sup>), pH 7.4, 150mM NaCl, 0.02% sodium azide and 50% glycerol.

**Synonyms:** IRS-1 IRS1

**Accession No.:** Swiss-Prot#: P35568 NCBI Gene#: 3667  
NCBI Protein#: NP\_005535.1

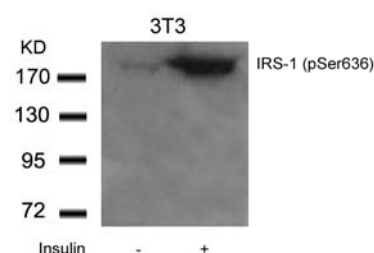
**Background:** May mediate the control of various cellular processes by insulin. When phosphorylated by the insulin receptor binds specifically to various cellular proteins containing SH2 domains such as phosphatidylinositol 3-kinase p85 subunit or GRB2. Activates phosphatidylinositol 3-kinase when bound to the regulatory p85 subunit

### References:

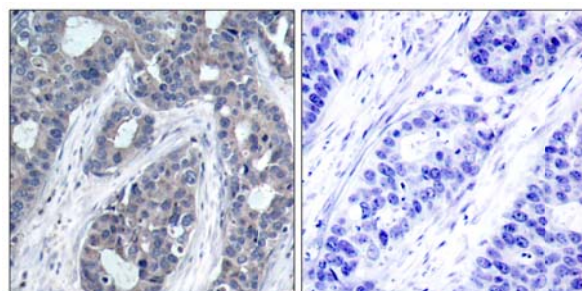
Ozes ON, et al. (2001) Proc Natl Acad Sci U S A; 98(8): 4640-4645  
Tzatsos A, et al. (2006) Mol Cell Biol; 26(1): 63-76  
Kadowaki T, et al. (2000) J Clin Invest; 106(4): 459-465  
Ozes ON, et al. (2001) Proc Natl Acad Sci U S A; 98(8): 4640-4645  
Szanto I, et al. (2000) Proc Natl Acad Sci U S A; 97(5): 2355-2360

### Recommended Dilutions:

Western blotting 1:500~1:1000  
Immunohistochemistry 1:50~1:100



Western blot analysis of extracts from 3T3 cells untreated or treated with Insulin using IRS-1 (Phospho-Ser636) Antibody #11230.



Immunohistochemical analysis of paraffin-embedded human breast carcinoma tissue using IRS-1 (Phospho-Ser636) Antibody #11230 (left) or the same antibody preincubated with blocking peptide (right).

### Citation:

If you publish research using #11230 please [let us know](#).

**Related Pathway:** Akt, MAPK, Insulin/Glucose

**Note:** For western blotting, incubate membrane with diluted antibody in 5% nonfat milk, 1X TBS, 0.1% Tween-20 at 4°C with gentle shaking, overnight.