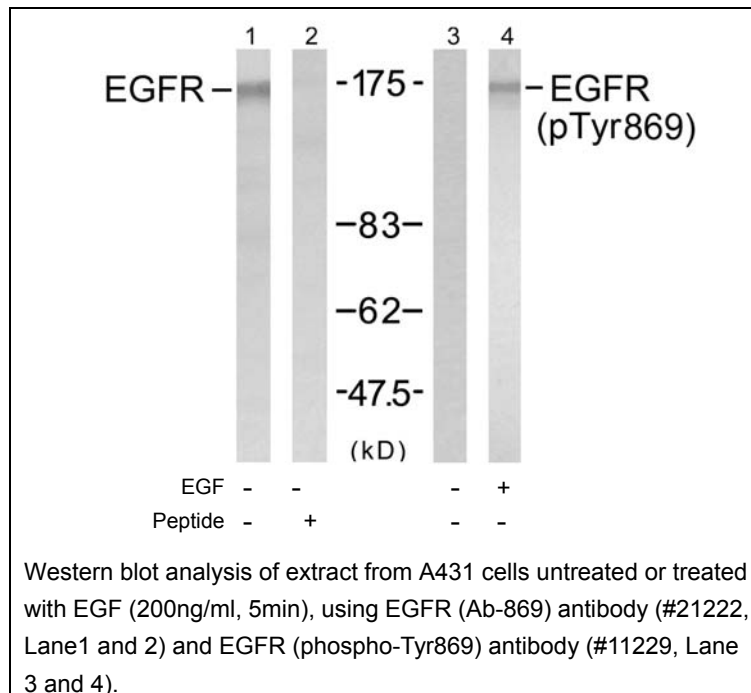




EGFR (Phospho-Tyr869) Antibody

#11229

- Catalog Number:** 11229-1, 11229-2
Amount: 50µg/50µl, 100µg/100µl
Swiss-Prot No. : P00533
Form of Antibody: Rabbit IgG in phosphate buffered saline (without Mg²⁺ and Ca²⁺), pH 7.4, 150mM NaCl, 0.02% sodium azide and 50% glycerol.
Storage/Stability: Store at -20°C/1 year
Immunogen: The antiserum was produced against synthesized phosphopeptide derived from human EGFR around the phosphorylation site of tyrosine 869 (K-E-Y^P-H-A).
Purification: The antibody was affinity-purified from rabbit antiserum by affinity-chromatography using epitope-specific phosphopeptide. The antibody against non-phosphopeptide was removed by chromatography using non-phosphopeptide corresponding to the phosphorylation site.
Specificity/Sensitivity: EGFR (phospho-Tyr869) antibody detects endogenous levels of EGFR only when phosphorylated at tyrosine 869.
Reactivity: Human, Mouse, Rat
Applications: WB: 1:500~1:1000
References: Inoue A, et al. (2005) PLoS Med; 2(1): e13
Sun H, et al. (2004) EMBO J; 23(1): 100-110
Kanner SB, et al. (1991) Mol Cell Biol; 11(2): 713-720
Wu TT, et al. (1998) Mol Biol Cell; 9(7): 1661-1674
O'Rourke DM, et al. (1997) Proc Natl Acad Sci U S A; 94(7): 3250-3255
Goldstein DJ, et al. (1994) J Virol; 68(7): 4432-4441



For Research Use Only