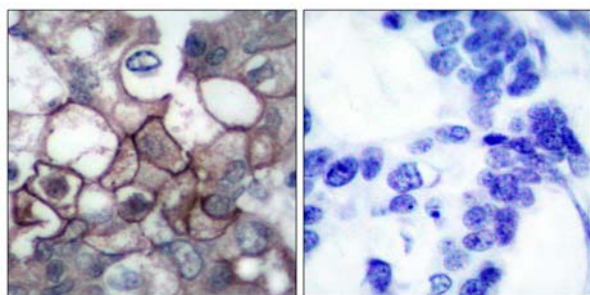




## EGFR (Phospho-Tyr1197) Antibody

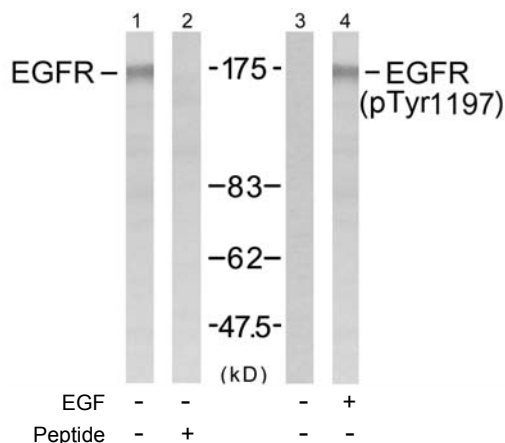
#11228

- Catalog Number:** 11228-1, 11228-2  
**Amount:** 50µg/50µl, 100µg/100µl  
**Swiss-Prot No. :** P00533  
**Form of Antibody:** Rabbit IgG in phosphate buffered saline (without Mg<sup>2+</sup> and Ca<sup>2+</sup>), pH 7.4, 150mM NaCl, 0.02% sodium azide and 50% glycerol.  
**Storage/Stability:** Store at -20°C/1 year  
**Immunogen:** The antiserum was produced against synthesized phosphopeptide derived from human EGFR around the phosphorylation site of tyrosine 1197 (A-E-Y<sup>P</sup>-L-R).  
**Purification:** The antibody was affinity-purified from rabbit antiserum by affinity-chromatography using epitope-specific phosphopeptide. The antibody against non-phosphopeptide was removed by chromatography using non-phosphopeptide corresponding to the phosphorylation site.  
**Specificity/Sensitivity:** EGFR (phospho-Tyr1197) antibody detects endogenous levels of EGFR only when phosphorylated at tyrosine 1197  
**Reactivity:** Human, Mouse, Rat  
**Applications:** WB: 1:500~1:1000 IHC: 1:50~1:100  
**References:** Corbalan-Garcia S, et al. (1996) Mol Cell Biol; 16(10): 5674-5682  
Kanner SB, et al. (1991) Mol Cell Biol; 11(2): 713-720  
Wu TT, et al. (1998) Mol Biol Cell; 9(7): 1661-1674  
O'Rourke DM, et al. (1997) Proc Natl Acad Sci U S A; 94(7): 3250-3255  
Goldstein DJ, et al. (1994) J Virol; 68(7): 4432-4441



P-Peptide - +

Immunohistochemical analysis of paraffin-embedded human breast carcinoma tissue, using EGFR (phospho-Tyr1197) antibody (#11228).



Western blot analysis of extract from A431 cells untreated or treated with EGF (200ng/ml, 5min), using EGFR (Ab-1197) antibody (#21221, Lane 1 and 2) and EGFR (phospho-Tyr1197) antibody (#11228, Lane 3 and 4).

**For Research Use Only**