

#11210

Synaptotagmin II (Phospho-Thr202) Antibody



Catalog: #11210-1 50µl **Orders:** order@signalwayantibody.com
#11210-2 100µl **Support:** tech@signalwayantibody.com
Storage: Store at -20°C/1 year **Web:** www.signalwayantibody.com

Application	Species Reactivity	Source	Molecular Wt.
IF	Human Mouse Rat	Rabbit Polyconal Ab	46KD

Description: Antibodies were produced by immunizing rabbits with synthetic phosphopeptide and KLH conjugates. Antibodies were purified by affinity-chromatography using epitope-specific phosphopeptide. Non-phospho specific antibodies were removed by chromatography using non-phosphopeptide.

Specificity: The antibody detects endogenous level of Synaptotagmin II only when phosphorylated at threonine202.

Immunogen: Peptide sequence around phosphorylation site of threonine 202 (R-K-T(p)-L-N) derived from Human.

Formulation: Supplied at 1.0mg/mL in phosphate buffered saline (without Mg²⁺ and Ca²⁺), pH 7.4, 150mM NaCl, 0.02% sodium azide and 50% glycerol.

Synonyms: SYT2

Accession No.: Swiss-Prot#: Q8N9I0 NCBI Gene#: 127833
NCBI Protein#: NP_001129976.1

Background: The synaptotagmins are integral membrane proteins of synaptic vesicles thought to serve as Ca²⁺ sensors in the process of vesicular trafficking and exocytosis. Calcium binding to synaptotagmin I participates in triggering neurotransmitter release at the synapse

References:

Gustavsson N, et al. Proc Natl Acad Sci U S A. 2008 Mar 11; 105(10):3992-7.
Cnops L, et al. Cereb Cortex. 2008 May; 18(5):1221-31.
Lynch KL, et al. Mol Biol Cell. 2007 Dec; 18(12):4957-68.

Citation:

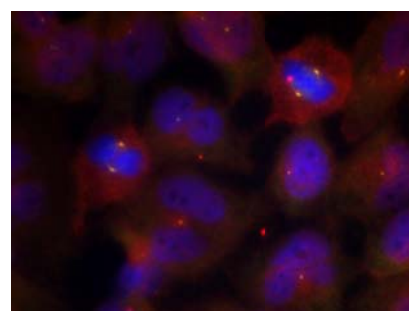
If you publish research using #11210 please [let us know](#).

Related Pathway: Cytoskeletal/Adhesion, Neuroscience

Note: For western blotting, incubate membrane with diluted antibody in 5% nonfat milk, 1X TBS, 0.1% Tween-20 at 4°C with gentle shaking, overnight.

Recommended Dilutions:

Immunofluorescence 1:100~1:200



Immunofluorescence staining of methanol-fixed HeLa cells using Synaptotagmin II (Phospho-Thr202) Antibody #11210.