

#11206

p21Cip1 (Phospho-Thr145) Antibody

Catalog: #11206-1 50µl **Orders:** order@signalwayantibody.com
#11206-2 100µl **Support:** tech@signalwayantibody.com
Storage: Store at -20°C/1 year **Web:** www.signalwayantibody.com



Application	Species Reactivity	Source	Molecular Wt.
IHC	Human	Rabbit Polyconal Ab	21KD

Description: Antibodies were produced by immunizing rabbits with synthetic phosphopeptide and KLH conjugates. Antibodies were purified by affinity-chromatography using epitope-specific phosphopeptide. Non-phospho specific antibodies were removed by chromatography using non-phosphopeptide.

Recommended Dilutions:

Immunohistochemistry 1:50~1:100

Specificity: The antibody detects endogenous level of p21Cip1 only when phosphorylated at threonine 145.

Immunogen: Peptide sequence around phosphorylation site of threonine 145 (R-Q-T(p)-S-M) derived from Human p21Cip1.

Formulation: Supplied at 1.0mg/mL in phosphate buffered saline (without Mg²⁺ and Ca²⁺), pH 7.4, 150mM NaCl, 0.02% sodium azide and 50% glycerol.

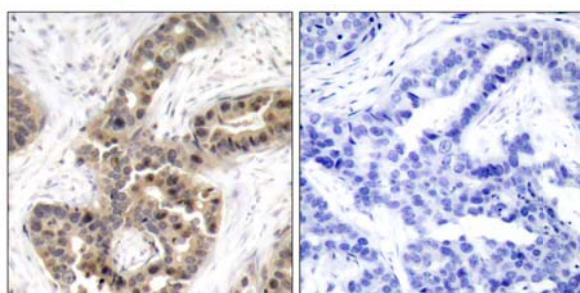
Synonyms: CAP20 CDK-interacting protein 1 CDKN1 CDKN1A
CDN1A

Accession No.: Swiss-Prot#: P38936 NCBI Gene#: 1026
NCBI Protein#: NP_000380.1

Background: May be the important intermediate by which p53 mediates its role as an inhibitor of cellular proliferation in response to DNA damage. Binds to and inhibits cyclin-dependent kinase activity, preventing phosphorylation of critical cyclin-dependent kinase substrates and blocking cell cycle progression.

References:

Ocker M Int, et al. (2007) J Biochem Cell Biol. 39(7-8):1367-74.
Dangi S, et al. (2006) Cell Prolif. 39(4):261-79.
Chen J, et al. (2006) Am J Physiol Heart Circ Physiol. 290(4):H1575-86



Immunohistochemical analysis of paraffin-embedded human breast carcinoma tissue using p21Cip1 (Phospho-Thr145) Antibody #11206 (left) or the same antibody preincubated with blocking peptide (right).

Citation:

If you publish research using #11206 please [let us know](#).

Related Pathway: CellCycle, Akt

Note: For western blotting, incubate membrane with diluted antibody in 5% nonfat milk, 1X TBS, 0.1% Tween-20 at 4°C with gentle shaking, overnight.