

#11196

HSP90B (Phospho-Ser254) Antibody

Catalog: #11196-1 50µl Orders: order@signalwayantibody.com
#11196-2 100µl Support: tech@signalwayantibody.com
Storage: Store at -20°C/1 year Web: www.signalwayantibody.com



Application	Species Reactivity	Source	Molecular Wt.
WB	Human Mouse Rat	Rabbit Polyconal Ab	92KD

Description: Antibodies were produced by immunizing rabbits with synthetic phosphopeptide and KLH conjugates. Antibodies were purified by affinity-chromatography using epitope-specific phosphopeptide. Non-phospho specific antibodies were removed by chromatography using non-phosphopeptide.

Specificity: The antibody detects endogenous level of HSP90B only when phosphorylated at serine 254.

Immunogen: Peptide sequence around phosphorylation site of serine 254 (V-G-S(p)-D-E) derived from Human HSP90B.

Formulation: Supplied at 1.0mg/mL in phosphate buffered saline (without Mg²⁺ and Ca²⁺), pH 7.4, 150mM NaCl, 0.02% sodium azide and 50% glycerol.

Synonyms: HS90B HSP 84 HSP90-beta HSP90AB1 HSPC2

Accession No.: Swiss-Prot#: P08238 NCBI Gene#: 3326
NCBI Protein#: NP_031381.2

Background: Molecular chaperone. Has ATPase activity.

References:

Zhao R, Houry WA.(2007) Adv Exp Med Biol; 594: 27-36.
Olsen JV, et al. (2006) Cell; 127(3): 635-648
Ogiso H, et al. (2004) Biochemistry; 43(49): 15510-15519

Citation:

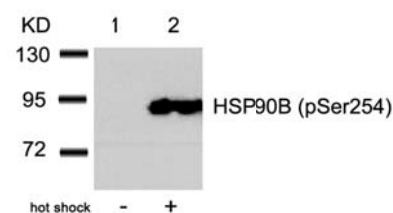
If you publish research using #11196 please [let us know](#).

Related Pathway: MAPK Cancer/Apoptosis

Note: For western blotting, incubate membrane with diluted antibody in 5% nonfat milk, 1X TBS, 0.1% Tween-20 at 4°C with gentle shaking, overnight.

Recommended Dilutions:

Western blotting 1:500~1:1000



Western blot analysis of extracts from HeLa cells untreated (lane 1) or treated with hot shock (lane 2) using HSP90B (Phospho-Ser254) Antibody #11196.