

#11195

HSF1 (Phospho-Ser307) Antibody

Catalog: #11195-1 50µl **Orders:** order@signalwayantibody.com
#11195-2 100µl **Support:** tech@signalwayantibody.com
Storage: Store at -20°C/1 year **Web:** www.signalwayantibody.com



Application	Species Reactivity	Source	Molecular Wt.
WB IF	Human	Rabbit Polyconal Ab	82KD

Description: Antibodies were produced by immunizing rabbits with synthetic phosphopeptide and KLH conjugates. Antibodies were purified by affinity-chromatography using epitope-specific phosphopeptide. Non-phospho specific antibodies were removed by chromatography using non-phosphopeptide.

Specificity: The antibody detects endogenous level of HSF1 only when phosphorylated at serine 307.

Immunogen: Peptide sequence around phosphorylation site of serine 307 (P-Q-S(p)-P-R) derived from Human HSF1.

Formulation: Supplied at 1.0mg/mL in phosphate buffered saline (without Mg²⁺ and Ca²⁺), pH 7.4, 150mM NaCl, 0.02% sodium azide and 50% glycerol.

Synonyms: HSTF 1

Accession No.: Swiss-Prot#: Q00613 NCBI Gene#: 3297
NCBI Protein#: NP_005517.1

Background: DNA-binding protein that specifically binds heat shock promoter elements (HSE) and activates transcription. In higher eukaryotes, HSF is unable to bind to the HSE unless the cells are heat shocked.

References:

Guettouche T, et al. (2005) BMC Biochem ; 6(1): 4
Wang X, et al. (2003) Mol Cell Biol ; 23(17): 6013-6026
Jolly C, et al. (1999) Proc Natl Acad Sci USA; 96(12): 6769-6774.

Citation:

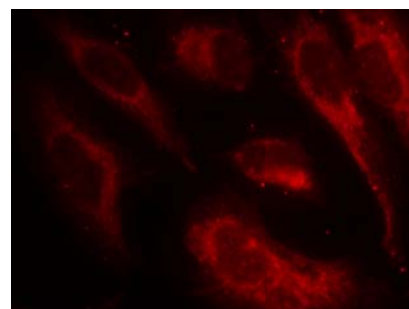
If you publish research using #11195 please [let us know](#).

Related Pathway: MAPK, Chromatin/Transcription

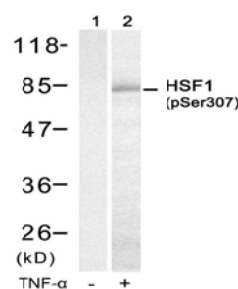
Note: For western blotting, incubate membrane with diluted antibody in 5% nonfat milk, 1X TBS, 0.1% Tween-20 at 4°C with gentle shaking, overnight.

Recommended Dilutions:

Western blotting 1:500~1:1000
Immunofluorescence 1:100~1:200



Immunofluorescence staining of methanol-fixed HeLa cells using HSF1 (Phospho-Ser307) Antibody #11195.



Western blot analysis of extracts from HUVEC cells untreated (lane 1) or treated with TNF-α (lane 2) using HSF1 (Phospho-Ser307) Antibody #11195.