

#11191

HDAC2 (Phospho-Ser394) Antibody



Catalog: #11191-1 50µl **Orders:** order@signalwayantibody.com
#11191-2 100µl **Support:** tech@signalwayantibody.com
Storage: Store at -20°C/1 year **Web:** www.signalwayantibody.com

Application	Species Reactivity	Source	Molecular Wt.
WB IHC IF	Human Mouse Rat	Rabbit Polyconal Ab	60KD

Description: Antibodies were produced by immunizing rabbits with synthetic phosphopeptide and KLH conjugates. Antibodies were purified by affinity-chromatography using epitope-specific phosphopeptide. Non-phospho specific antibodies were removed by chromatography using non-phosphopeptide.

Specificity: The antibody detects endogenous level of HDAC2 only when phosphorylated at serine 394.

Immunogen: Peptide sequence around phosphorylation site of serine 394 (E-D-S(p)-G-D) derived from Human HDAC2.

Formulation: Supplied at 1.0mg/mL in phosphate buffered saline (without Mg²⁺ and Ca²⁺), pH 7.4, 150mM NaCl, 0.02% sodium azide and 50% glycerol.

Synonyms: HD2

Accession No.: Swiss-Prot#: Q92769 NCBI Gene#: 3066
NCBI Protein#: NP_001518.2

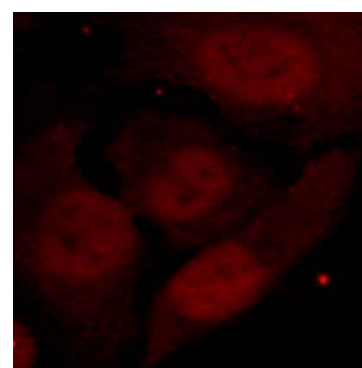
Background: Responsible for the deacetylation of lysine residues on the N-terminal part of the core histones (H2A, H2B, H3 and H4). Histone deacetylation gives a tag for epigenetic repression and plays an important role in transcriptional regulation, cell cycle progression and developmental events. Histone deacetylases act via the formation of large multiprotein complexes

References:

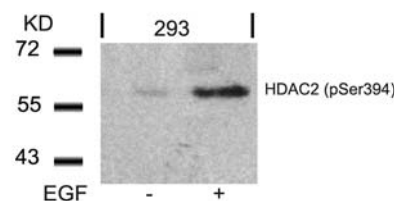
Tsai SC, et al.(2002)J Biol Chem; 277(35): 31826-33

Recommended Dilutions:

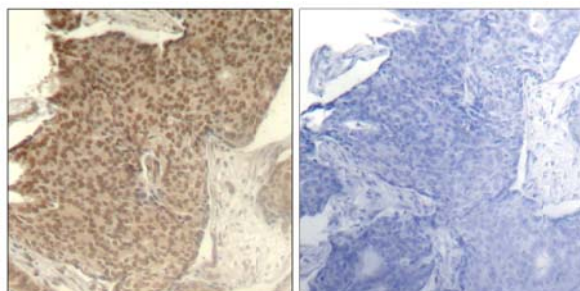
Western blotting 1:500~1:1000
Immunohistochemistry 1:50~1:100
Immunofluorescence 1:100~1:200



Immunofluorescence staining of methanol-fixed HeLa cells showing nuclear staining using HDAC2 (Phospho-Ser394) Antibody #11191.



Western blot analysis of extracts from 293 cells untreated or treated with EGF using HDAC2 (Phospho-Ser394) Antibody #11191.



Immunohistochemical analysis of paraffin-embedded human breast carcinoma tissue using HDAC2 (Phospho-Ser394) Antibody #11191 (left) or the same antibody preincubated with blocking peptide (right).

Citation:

If you publish research using #11191 please [let us know](#).

Related Pathway: Cell Cycle, Chromatin/Transcription, Wnt/beta-catenin, NF-kappa B

Note: For western blotting, incubate membrane with diluted antibody in 5% nonfat milk, 1X TBS, 0.1% Tween-20 at 4°C with gentle shaking, overnight.

This product is for in vitro research use only and is not intended for use in humans or animals.