

#11185

DARPP-32 (Phospho-Thr75) Antibody

Catalog: #11185-1 50µl **Orders:** order@signalwayantibody.com
#11185-2 100µl **Support:** tech@signalwayantibody.com
Storage: Store at -20°C/1 year **Web:** www.signalwayantibody.com



| Application | Species Reactivity | Source | Molecular Wt. |
|-------------|--------------------|---------------------|---------------|
| IF | Human Mouse Rat | Rabbit Polyconal Ab | 32KD |

Description: Antibodies were produced by immunizing rabbits with synthetic phosphopeptide and KLH conjugates. Antibodies were purified by affinity-chromatography using epitope-specific phosphopeptide. Non-phospho specific antibodies were removed by chromatography using non-phosphopeptide.

Specificity: The antibody detects endogenous level of DARPP-32 only when phosphorylated at threonine 75.

Immunogen: Peptide sequence around phosphorylation site of threonine 75 (A-Y-T(p)-P-P) derived from Human DARPP-32.

Formulation: Supplied at 1.0mg/mL in phosphate buffered saline (without Mg²⁺ and Ca²⁺), pH 7.4, 150mM NaCl, 0.02% sodium azide and 50% glycerol.

Synonyms: IPPD PPP1R1B

Accession No.: Swiss-Prot#: Q9UD71 NCBI Gene#: 84152
NCBI Protein#: NP_115568.2

Background: Inhibitor of protein-phosphatase 1.

References:

Gammie SC. et al.(2008) PLoS ONE. 2008 Apr 9;3(4):e1974.
Alves S. et al. (2008) Hum Mol Genet. 2008 Jul 15;17(14):2071-83.
Bibb, J.A. et al. (1999) Nature 402, 669-671
Nishi, A. et al. (1997) J. Neurosci. 17, 8147-8155

Citation:

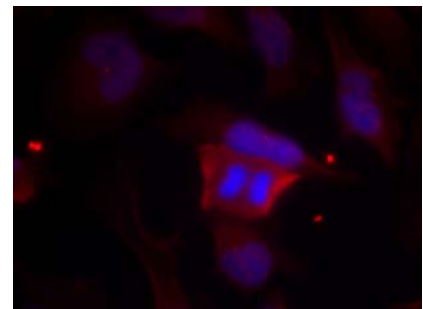
If you publish research using #11185 please [let us know](#).

Related Pathway: Neuroscience

Note: For western blotting, incubate membrane with diluted antibody in 5% nonfat milk, 1X TBS, 0.1% Tween-20 at 4°C with gentle shaking, overnight.

Recommended Dilutions:

Immunofluorescence 1:100~1:200



Immunofluorescence staining of methanol-fixed HeLa cells using DARPP-32 (Phospho-Thr75) Antibody #11185.