

#11179

ASK1 (Phospho-Ser966) Antibody

Catalog: #11179-1 50µl **Orders:** order@signalwayantibody.com
#11179-2 100µl **Support:** tech@signalwayantibody.com
Storage: Store at -20°C/1 year **Web:** www.signalwayantibody.com



Application	Species Reactivity	Source	Molecular Wt.
WB IHC	Human Mouse	Rabbit Polyconal Ab	155KD

Description: Antibodies were produced by immunizing rabbits with synthetic phosphopeptide and KLH conjugates. Antibodies were purified by affinity-chromatography using epitope-specific phosphopeptide. Non-phospho specific antibodies were removed by chromatography using non-phosphopeptide.

Specificity: The antibody detects endogenous level of ASK1 only when phosphorylated at serine 966.

Immunogen: Peptide sequence around phosphorylation site of serine 966 (S-I-S(p)-L-P) derived from Human ASK1.

Formulation: Supplied at 1.0mg/mL in phosphate buffered saline (without Mg²⁺ and Ca²⁺), pH 7.4, 150mM NaCl, 0.02% sodium azide and 50% glycerol.

Synonyms: ASK-1 M3K5 MAP3K5 MAPK/ERK kinase kinase 5 MAPKKK5

Accession No.: Swiss-Prot#: Q99683 NCBI Gene#: 4217
NCBI Protein#: NP_005914.1

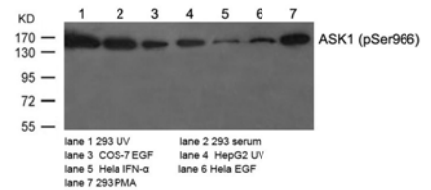
Background: Component of a protein kinase signal transduction cascade. Phosphorylates and activates MAP2K4 and MAP2K6, which in turn activate the JNK and p38 MAP kinases, respectively. Overexpression induces apoptotic cell death.

References:

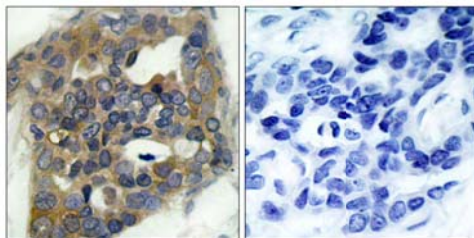
Zhang W, et al. (2005) J Biol Chem. 280(19): 19036-19044.
Fujii K, et al. (2004) Oncogene. 23(29):5099-5104.
Goldman EH, et al. (2004) J Biol Chem 2004 Mar 12; 279(11): 10442-10449.
Zhang L, et al. (1999) Proc Natl Acad Sci U S A. 96(15): 8511-8515.

Recommended Dilutions:

Western blotting 1:500~1:1000
Immunohistochemistry 1:50~1:100



Western blot analysis of extracts from various cells using ASK1 (Phospho-Ser966) Antibody #11179.



Immunohistochemical analysis of paraffin-embedded human breast carcinoma tissue using ASK1 (Phospho-Ser966) Antibody #11179 (left) or the same antibody preincubated with blocking peptide (right).

Citation:

If you publish research using #11179 please [let us know](#).

Related Pathway: MAPK, Akt, Cancer/Apoptosis

Note: For western blotting, incubate membrane with diluted antibody in 5% nonfat milk, 1X TBS, 0.1% Tween-20 at 4°C with gentle shaking, overnight.