

#11164

## HSP27 (Phospho-Ser15) Antibody

**Catalog:** #11164-1 50µl **Orders:** [order@signalwayantibody.com](mailto:order@signalwayantibody.com)  
#11164-2 100µl **Support:** [tech@signalwayantibody.com](mailto:tech@signalwayantibody.com)  
**Storage:** Store at -20°C/1 year **Web:** [www.signalwayantibody.com](http://www.signalwayantibody.com)



Application	Species Reactivity	Source	Molecular Wt.
WB IHC IF	Human	Rabbit Polyconal Ab	27KD

**Description:** Antibodies were produced by immunizing rabbits with synthetic phosphopeptide and KLH conjugates. Antibodies were purified by affinity-chromatography using epitope-specific phosphopeptide. Non-phospho specific antibodies were removed by chromatography using non-phosphopeptide.

**Specificity:** The antibody detects endogenous level of HSP27 only when phosphorylated at serine 15.

**Immunogen:** Peptide sequence around phosphorylation site of serine15 (G-P-S(p)-W-D) derived from Human HSP27.

**Formulation:** Supplied at 1.0mg/mL in phosphate buffered saline (without Mg<sup>2+</sup> and Ca<sup>2+</sup>), pH 7.4, 150mM NaCl, 0.02% sodium azide and 50% glycerol.

**Synonyms:** 28 kDa heat shock protein Estrogen-regulated 24 kDa protein  
Growth-related 25 kDa protein HSP 27 HSP25

**Accession No.:** Swiss-Prot#: P04792 NCBI Gene#: 3315  
NCBI Protein#: NP\_001531.1

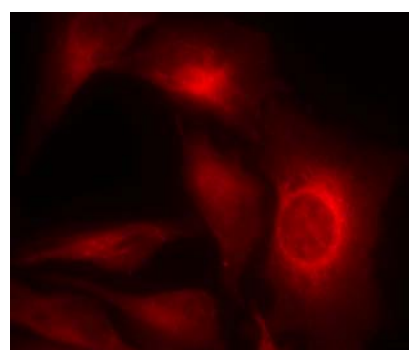
**Background:** Involved in stress resistance and actin organization.

### References:

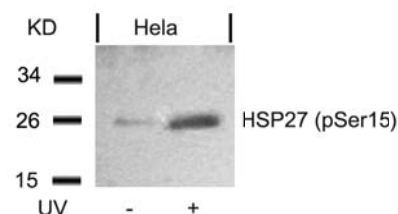
Tremolada L, et al. (2005) Proteomics. 5(3): 788-795.  
McGregor E, et al. (2004) Mol Cell Proteomics. 3(2): 115-124.  
Benn SC, et al. (2002) Neuron. 36(1): 45-56.  
MacDonald JA, et al. (2002) Mol Cell Proteomics. 1(4): 314-322.

### Recommended Dilutions:

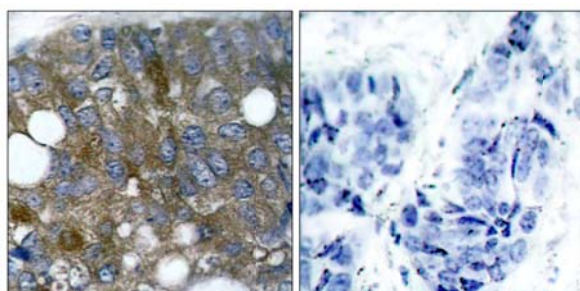
Western blotting 1:500~1:1000  
Immunohistochemistry 1:50~1:100  
Immunofluorescence 1:100~1:200



Immunofluorescence staining of methanol-fixed HeLa cells showing cytoplasmic staining using HSP27 (Phospho-Ser15) Antibody #11164.



Western blot analysis of extracts from HeLa cells untreated or treated with UV using HSP27 (Phospho-Ser15) Antibody #11164.



Immunohistochemical analysis of paraffin-embedded human breast carcinoma tissue using HSP27 (Phospho-Ser15) Antibody #11164 (left) or the same antibody preincubated with blocking peptide (right).

### Citation:

If you publish research using #11164 please [let us know](#).

**Related Pathway:** MAPK, Cancer/Apoptosis

**Note:** For western blotting, incubate membrane with diluted antibody in 5% nonfat milk, 1X TBS, 0.1% Tween-20 at 4°C with gentle shaking, overnight.

This product is for in vitro research use only and is not intended for use in humans or animals.