

#11156

eNOS (Phospho-Ser1177) Antibody

Catalog: #11156-1 50µl Orders: order@signalwayantibody.com
#11156-2 100µl Support: tech@signalwayantibody.com
Storage: Store at -20°C/1 year Web: www.signalwayantibody.com



| Application | Species Reactivity | Source | Molecular Wt. |
|-------------|--------------------|---------------------|---------------|
| IHC IF | Human Mouse Rat | Rabbit Polyconal Ab | 140KD |

Description: Antibodies were produced by immunizing rabbits with synthetic phosphopeptide and KLH conjugates. Antibodies were purified by affinity-chromatography using epitope-specific phosphopeptide. Non-phospho specific antibodies were removed by chromatography using non-phosphopeptide.

Specificity: The antibody detects endogenous level of eNOS only when phosphorylated at serine 1177.

Immunogen: Peptide sequence around phosphorylation site of serine 1177 (T-Q-S(p)-F-S) derived from Human eNOS.

Formulation: Supplied at 1.0mg/mL in phosphate buffered saline (without Mg²⁺ and Ca²⁺), pH 7.4, 150mM NaCl, 0.02% sodium azide and 50% glycerol.

Synonyms: Constitutive NOS EC-NOS ECNOS NOS3 NOSIII

Accession No.: Swiss-Prot#: P29474 NCBI Gene#: 4846
NCBI Protein#: NP_000594.2

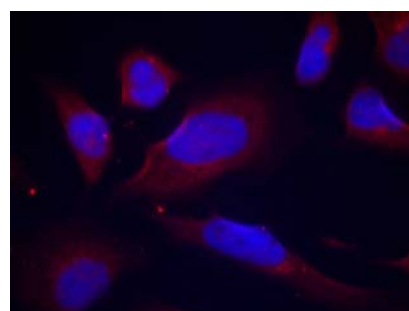
Background: Produces nitric oxide (NO) which is implicated in vascular smooth muscle relaxation through a cGMP-mediated signal transduction pathway. NO mediates vascular endothelial growth factor (VEGF)-induced angiogenesis in coronary vessels and promotes blood clotting through the activation of platelets.

References:

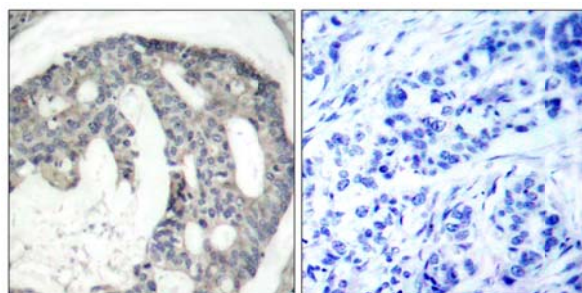
Fulton, D. et al. (1999) Nature 399, 597-601.
Harris, M.B. et al. (2001) J. Biol. Chem. 276, 16587-16591.
Thomas, S.R. et al. (2002) J. Biol. Chem. 277, 6017-6024.

Recommended Dilutions:

Immunohistochemistry 1:50~1:100
Immunofluorescence 1:100~1:200



Immunofluorescence staining of methanol-fixed HeLa cells using eNOS (Phospho-Ser1177) Antibody #11156.



Immunohistochemical analysis of paraffin-embedded human breast carcinoma tissue using eNOS (Phospho-Ser1177) Antibody #11156 (left) or the same antibody preincubated with blocking peptide (right).

Citation:

If you publish research using #11156 please [let us know](#).

Related Pathway: Akt, Insulin/Glucose

Note: For western blotting, incubate membrane with diluted antibody in 5% nonfat milk, 1X TBS, 0.1% Tween-20 at 4°C with gentle shaking, overnight.