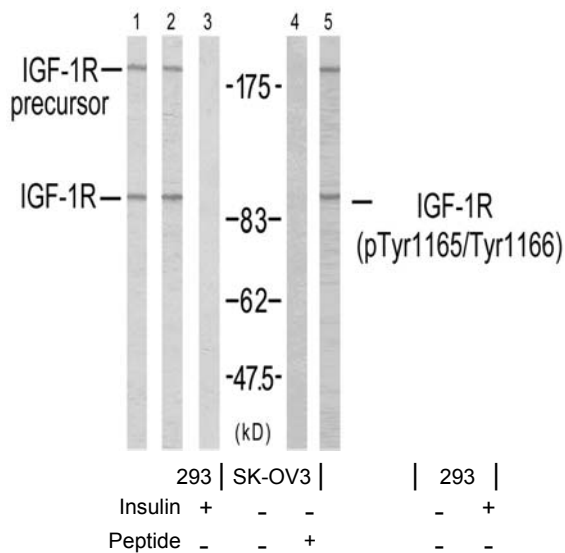




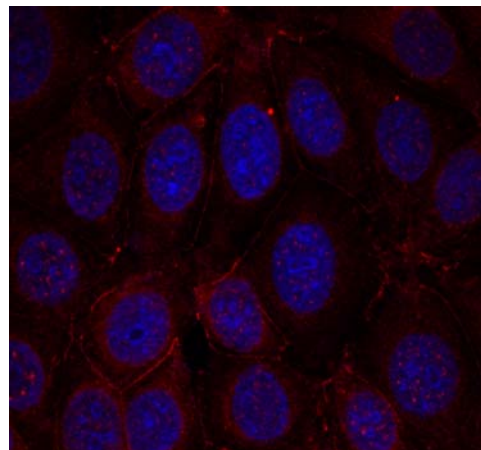
IGF-1R (Phospho-Tyr1165/Tyr1166) Antibody

#11088

- Catalog Number:** 11088-1, 11088-2
Amount: 50µg/50µl, 100µg/100µl
Form of Antibody: Rabbit IgG in phosphate buffered saline (without Mg²⁺ and Ca²⁺), pH 7.4, 150mM NaCl, 0.02% sodium azide and 50% glycerol.
Storage/Stability: Store at -20°C/1 year
Immunogen: The antiserum was produced against synthesized phosphopeptide derived from human IGF-1R around the phosphorylation site of tyrosine 1165/tyrosine 1166 (T-D-Y^P-Y^P-R-K).
Purification: The antibody was affinity-purified from rabbit antiserum by affinity-chromatography using epitope-specific phosphopeptide. The antibody against non-phosphopeptide was removed by chromatography using non-phosphopeptide corresponding to the phosphorylation site.
Specificity/Sensitivity: IGF-1R (phospho-Tyr1165/Tyr1166) antibody detects endogenous levels of IGF-1R only when phosphorylated at tyrosine 1165/tyrosine1166.
Reactivity: Human, Mouse, Rat
Applications: WB: 1:500~1:1000 IF:1:100~1:200
Swiss-Prot No. : P08069
References: Li S, et al. (1994) J Biol Chem; 269(51): 32558-64.



Western blot analysis using IGF-1R (Ab-1165/1166) antibody (#21081, Line 1, 2 and 3) and IGF-1R (phospho-Tyr1165/Tyr1166) antibody (#11088, Line 4 and 5).



Immunofluorescence staining of methanol-fixed MCF7 cells using IGF-1R (phospho-Tyr1165/Tyr1166) antibody (#11088, Red).

For Research Use Only