

#11083

## ICAM-1 (Phospho-Tyr512) Antibody

**Catalog:** #11083-1      50µl      **Orders:** [order@signalwayantibody.com](mailto:order@signalwayantibody.com)  
#11083-2      100µl      **Support:** [tech@signalwayantibody.com](mailto:tech@signalwayantibody.com)  
**Storage:** Store at -20°C/1 year      **Web:** [www.signalwayantibody.com](http://www.signalwayantibody.com)



Application	Species Reactivity	Source	Molecular Wt.
WB	Human	Rabbit Polyconal Ab	92KD

**Description:** Antibodies were produced by immunizing rabbits with synthetic phosphopeptide and KLH conjugates. Antibodies were purified by affinity-chromatography using epitope-specific phosphopeptide. Non-phospho specific antibodies were removed by chromatography using non-phosphopeptide.

**Specificity:** The antibody detects endogenous level of ICAM-1 only when phosphorylated at tyrosine 512.

**Immunogen:** Peptide sequence around phosphorylation site of tyrosine 512 (K-K-Y(p)-R-L) derived from Human ICAM-1.

**Formulation:** Supplied at 1.0mg/mL in phosphate buffered saline (without Mg<sup>2+</sup> and Ca<sup>2+</sup>), pH 7.4, 150mM NaCl, 0.02% sodium azide and 50% glycerol.

**Synonyms:** ICA1 ICAM1

**Accession No.:** Swiss-Prot#: P05362      NCBI Gene#: 3383  
NCBI Protein#: NP\_000192.2

**Background:** ICAM proteins are ligands for the leukocyte adhesion protein LFA-1 (integrin alpha-L/beta-2). During leukocyte trans-endothelial migration, ICAM1 engagement promotes the assembly of endothelial apical cups through SGEF and RHOG activation. In case of rhinovirus infection acts as a cellular receptor for the virus.

### References:

Greenwood J, et al. (2003) J Immunol; 171(4):2099-2108.  
Zhou Z, et al. (2005) Eur J Pharmacol; 513(1-2):1-8.  
Chen YH, et al. (2001) J Cell Biochem; 82(3):512-521

### Citation:

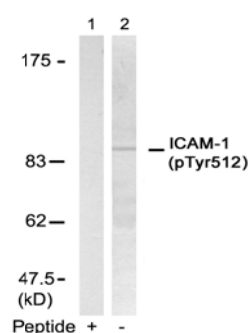
If you publish research using #11083 please [let us know](#).

**Related Pathway:** Cytoskeleta/Adhesion

**Note:** For western blotting, incubate membrane with diluted antibody in 5% nonfat milk, 1X TBS, 0.1% Tween-20 at 4°C with gentle shaking, overnight.

### Recommended Dilutions:

Western blotting      1:500~1:1000



Western blot analysis of extracts from HUVEC cells using ICAM-1 (Phospho-Tyr512) Antibody #11083 (Lane 2) and the same antibody preincubated with blocking peptide (Lane1).