

#11068

## BAD (Phospho-Ser136) Antibody

**Catalog:** #11068-1 50µl **Orders:** [order@signalwayantibody.com](mailto:order@signalwayantibody.com)  
#11068-2 100µl **Support:** [tech@signalwayantibody.com](mailto:tech@signalwayantibody.com)  
**Storage:** Store at -20°C/1 year **Web:** [www.signalwayantibody.com](http://www.signalwayantibody.com)



Application	Species Reactivity	Source	Molecular Wt.
WB IHC	Mouse	Rabbit Polyconal Ab	23KD

**Description:** Antibodies were produced by immunizing rabbits with synthetic phosphopeptide and KLH conjugates. Antibodies were purified by affinity-chromatography using epitope-specific phosphopeptide. Non-phospho specific antibodies were removed by chromatography using non-phosphopeptide.

**Specificity:** The antibody detects endogenous level of BAD only when phosphorylated at serine136.

**Immunogen:** Peptide sequence around phosphorylation site of serine136 (S-R-S(p)-A-P) derived from Mouse BAD.

**Formulation:** Supplied at 1.0mg/mL in phosphate buffered saline (without Mg<sup>2+</sup> and Ca<sup>2+</sup>), pH 7.4, 150mM NaCl, 0.02% sodium azide and 50% glycerol.

**Synonyms:** BBC6 BCL2L8

**Accession No.:** Swiss-Prot#: Q92934 NCBI Gene#: 572  
NCBI Protein#: NP\_004313.1

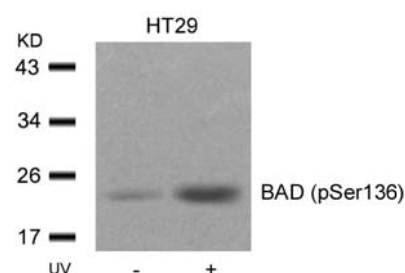
**Background:** The protein encoded by BAD gene is a member of the BCL-2 family. BCL-2 family members are known to be regulators of programmed cell death. This protein positively regulates cell apoptosis by forming heterodimers with BCL-xL and BCL-2, and reversing their death repressor activity. Proapoptotic activity of this protein is regulated through its phosphorylation. Protein kinases AKT and MAP kinase, as well as protein phosphatase calcineurin were found to be involved in the regulation of this protein. Alternative splicing of this gene results in two transcript variants which encode the same isoform.

### References:

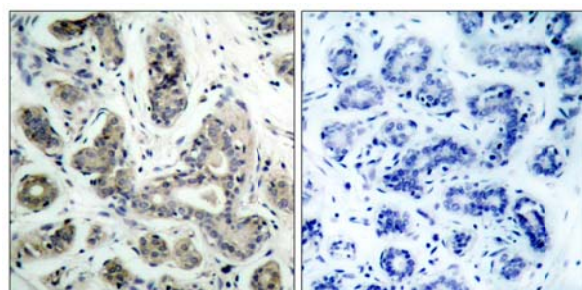
Wang XQ, et al. (2001). J Biol Chem.276 (48): 44504-44511.  
Lee YI, et al. (2001). J Biol Chem.276 (20): 16969-16977.  
Maiti D, et al. (2001). J Biol Chem.276 (1): 329-333.

### Recommended Dilutions:

Western blotting 1:500~1:1000  
Immunohistochemistry 1:50~1:100



Western blot analysis of extracts from HT29 cells untreated or treated with UV using BAD (Phospho-Ser136) Antibody #11068.



Immunohistochemical analysis of paraffin-embedded human breast carcinoma tissue using BAD (Phospho-Ser136) Antibody #11068 (left) or the same antibody preincubated with blocking peptide (right).

### Citation:

N Matsuda, Y Takano, S Kageyama, et al. Silencing of caspase-8 and caspase-3 by RNA interference prevents vascular endothelial cell injury in mice with endotoxic shock. Cardiovascular Research, 76:132-140. (2007)  
If you publish research using #11068 please [let us know](#).

**Related Pathway:** Akt, Cancer/Apoptosis, Insulin/Glucose, Cytoskeletal/Adhesion

**Note:** For western blotting, incubate membrane with diluted antibody in 5% nonfat milk, 1X TBS, 0.1% Tween-20 at 4°C with gentle shaking, overnight.

This product is for in vitro research use only and is not intended for use in humans or animals.