

#11033

## ATF2 (Phospho-Ser112 or 94) Antibody

**Catalog:** #11033-1 50µl **Orders:** [order@signalwayantibody.com](mailto:order@signalwayantibody.com)  
#11033-2 100µl **Support:** [tech@signalwayantibody.com](mailto:tech@signalwayantibody.com)  
**Storage:** Store at -20°C/1 year **Web:** [www.signalwayantibody.com](http://www.signalwayantibody.com)



Application	Species Reactivity	Source	Molecular Wt.
WB IHC	Human Mouse Rat	Rabbit Polyconal Ab	65-75KD

**Description:** Antibodies were produced by immunizing rabbits with synthetic phosphopeptide and KLH conjugates. Antibodies were purified by affinity-chromatography using epitope-specific phosphopeptide. Non-phospho specific antibodies were removed by chromatography using non-phosphopeptide.

**Specificity:** The antibody detects endogenous level of ATF-2 only when phosphorylated at serine 112 or 94.

**Immunogen:** Peptide sequence around phosphorylation site of serine 112 or 94 (D-L-S(p)-P-L) derived from Human ATF2.

**Formulation:** Supplied at 1.0mg/mL in phosphate buffered saline (without Mg<sup>2+</sup> and Ca<sup>2+</sup>), pH 7.4, 150mM NaCl, 0.02% sodium azide and 50% glycerol.

**Synonyms:** CREB2 CREBP1

**Accession No.:** Swiss-Prot#:P15336 NCBI Gene#: 1386  
NCBI Protein#: NP\_001871.2

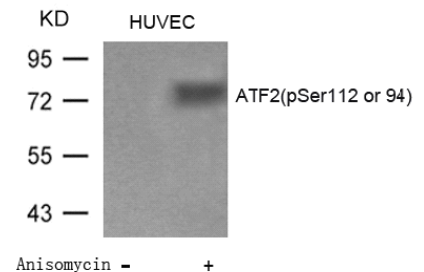
**Background:** Transcriptional activator, probably constitutive, which binds to the cAMP-responsive element (CRE) (consensus: 5'-GTGACGT[AC][AG]-3'), a sequence present in many viral and cellular promoters. Interaction with JUN redirects JUN to bind to CREs preferentially over the 12-O-tetradecanoylphorbol-13-acetate response elements (TRES) as part of an ATF2-c-Jun complex.

### References:

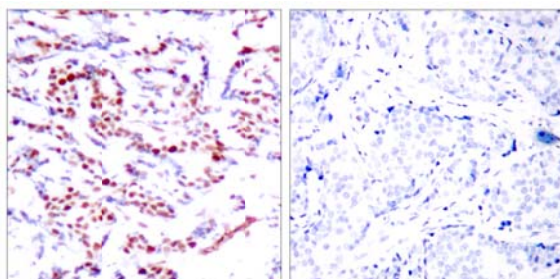
Beausoleil S A, et al. (2004) Proc Natl Acad Sci U S A. 101(33): 12130-12135.  
Abdel-Hafiz H A, et al. (1992) Mol Endocrinol. 6: 2079-2089.  
Gupta S, et al. (1995) Science. 267: 389-393.  
van Dam H, et al. (1995) EMBO J. 14(8): 1798-1811.  
Livingstone C, et al. (1995) EMBO J. 14: 1785-1797.

### Recommended Dilutions:

Western blotting 1:500~1:1000  
Immunohistochemistry 1:50~1:100



Western blot analysis of extracts from Huvec cells untreated or treated with Anisomycin using ATF2 (Phospho-Ser112 or 94) Antibody #11033.



Immunohistochemical analysis of paraffin-embedded human breast carcinoma tissue using ATF2 (Phospho-Ser112 or 94) Antibody #11033 (left) or the same antibody preincubated with blocking peptide (right).

### Citation:

If you publish research using #11033 please [let us know](#).

**Related Pathway:** MAPK, Chromatin/Transcription

**Note:** For western blotting, incubate membrane with diluted antibody in 5% nonfat milk, 1X TBS, 0.1% Tween-20 at 4°C with gentle shaking, overnight.

This product is for in vitro research use only and is not intended for use in humans or animals.