

**#11031**

## ATF2 (Phospho-Thr71 or 53) Antibody

**Catalog:** #11031-1      50µl      **Orders:** [order@signalwayantibody.com](mailto:order@signalwayantibody.com)  
 #11031-2      100µl      **Support:** [tech@signalwayantibody.com](mailto:tech@signalwayantibody.com)  
**Storage:** Store at -20°C/1 year      **Web:** [www.signalwayantibody.com](http://www.signalwayantibody.com)



Application	Species Reactivity	Source	Molecular Wt.
WB IHC	Human Mouse Rat	Rabbit Polyconal Ab	65-75KD

**Description:** Antibodies were produced by immunizing rabbits with synthetic phosphopeptide and KLH conjugates. Antibodies were purified by affinity-chromatography using epitope-specific phosphopeptide. Non-phospho specific antibodies were removed by chromatography using non-phosphopeptide.

**Specificity:** The antibody detects endogenous level of ATF-2 only when phosphorylated at threonine 71 or 53.

**Immunogen:** Peptide sequence around phosphorylation site of threonine 71 or 53 (T-P-T(p)-P-T) derived from Human ATF2.

**Formulation:** Supplied at 1.0mg/mL in phosphate buffered saline (without Mg<sup>2+</sup> and Ca<sup>2+</sup>), pH 7.4, 150mM NaCl, 0.02% sodium azide and 50% glycerol.

**Synonyms:** CREB2 CREBP1

**Accession No.:** Swiss-Prot#: P15336      NCBI Gene#: 1386  
 NCBI Protein#: NP\_001871.2

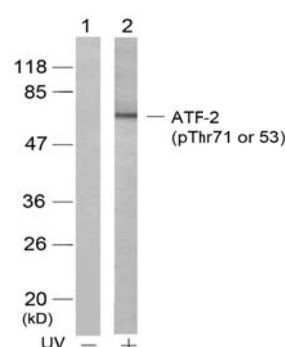
**Background:** Transcriptional activator, probably constitutive, which binds to the cAMP-responsive element (CRE) (consensus: 5'-GTGACGT[AC][AG]-3'), a sequence present in many viral and cellular promoters. Interaction with JUN redirects JUN to bind to CRES preferentially over the 12-O-tetradecanoylphorbol-13-acetate response elements (TRES) as part of an ATF2-c-Jun complex.

### References:

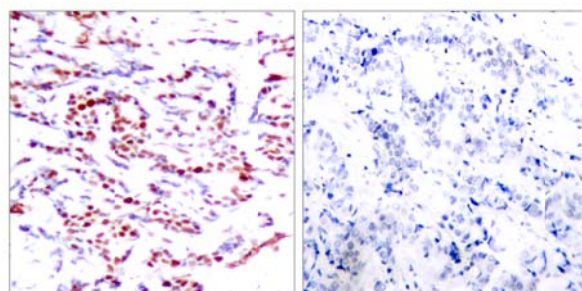
Sevilla A, et al. (2004) J Biol Chem. 279(26):27458-27465.  
 Waetzig G H, et al. (2002) J Immunol. 168(10): 5342-5351.  
 Abdel-Hafiz H A, et al. (1992) Mol Endocrinol. 6: 2079-2089.  
 Gupta S, et al. (1995) Science. 267: 389-393.  
 Van Dam H, et al. (1995) EMBO J. 14(8): 1798-1811.

### Recommended Dilutions:

Western blotting      1:500~1:1000  
 Immunohistochemistry      1:50~1:100



Western blot analysis of extracts from HeLa cells untreated (lane 1) or treated with UV (lane 2) using ATF2 (Phospho-Thr71 or 53) Antibody #11031.



Immunohistochemical analysis of paraffin-embedded human breast carcinoma tissue using ATF2 (Phospho-Thr71 or 53) Antibody #11031 (left) or the same antibody preincubated with blocking peptide (right).

### Citation:

If you publish research using #11031 please [let us know](#).

**Related Pathway:** MAPK, Chromatin/Transcription

**Note:** For western blotting, incubate membrane with diluted antibody in 5% nonfat milk, 1X TBS, 0.1% Tween-20 at 4°C with gentle shaking, overnight.

This product is for in vitro research use only and is not intended for use in humans or animals.