

#11030

ATF2 (Phospho-Thr69 or 51) Antibody

Catalog: #11030-1 50µl **Orders:** order@signalwayantibody.com
#11030-2 100µl **Support:** tech@signalwayantibody.com
Storage: Store at -20°C/1 year **Web:** www.signalwayantibody.com



Application	Species Reactivity	Source	Molecular Wt.
WB IHC IF	Human Mouse Rat	Rabbit Polyconal Ab	65-75KD

Description: Antibodies were produced by immunizing rabbits with synthetic phosphopeptide and KLH conjugates. Antibodies were purified by affinity-chromatography using epitope-specific phosphopeptide. Non-phospho specific antibodies were removed by chromatography using non-phosphopeptide.

Specificity: The antibody detects endogenous level of ATF-2 only when phosphorylated at threonine 69 or 51.

Immunogen: Peptide sequence around phosphorylation site of threonine 69 or 51 (D-Q-T(p)-P-T) derived from Human ATF2.

Formulation: Supplied at 1.0mg/mL in phosphate buffered saline (without Mg²⁺ and Ca²⁺), pH 7.4, 150mM NaCl, 0.02% sodium azide and 50% glycerol.

Synonyms: CREB2 CREBP1

Accession No.: Swiss-Prot#: P15336 NCBI Gene#: 1386
NCBI Protein#: NP_001871.2

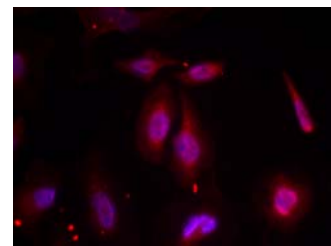
Background: Transcriptional activator, probably constitutive, which binds to the cAMP-responsive element (CRE) (consensus: 5'-GTGACGT[AC][AG]-3'), a sequence present in many viral and cellular promoters. Interaction with JUN redirects JUN to bind to CRES preferentially over the 12-O-tetradecanoylphorbol-13-acetate response elements (TRES) as part of an ATF2-c-Jun complex.

References:

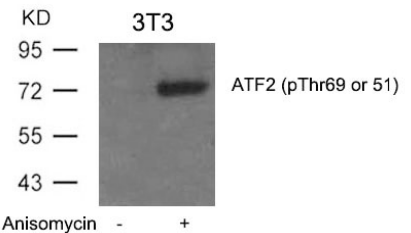
Sevilla A, et al. (2004) J Biol Chem. 279(26):27458-27465.
Alsayed Y, et al. (2001) J Biol Chem. 276(6): 4012-4019.
Abdel-Hafiz H A, et al. (1992) Mol Endocrinol. 6: 2079-2089.
Gupta S, et al. (1995) Science. 267: 389-393.

Recommended Dilutions:

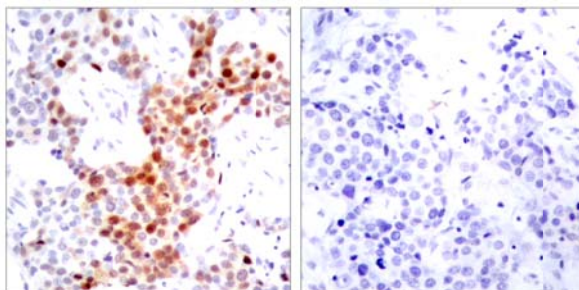
Western blotting 1:500
Immunohistochemistry 1:50~1:100
Immunofluorescence 1:100~1:200



Immunofluorescence staining of methanol-fixed HeLa cells using ATF2 (Phospho-Thr69 or 51) Antibody #11030.



Western blot analysis of extracts from 3T3 cells untreated or treated with Anisomycin using ATF2 (Phospho-Thr69 or 51) Antibody #11030.



Immunohistochemical analysis of paraffin-embedded human breast carcinoma tissue using ATF2 (Phospho-Thr69 or 51) Antibody #11030 (left) or the same antibody preincubated with blocking peptide (right).

Citation:

If you publish research using #11030 please [let us know](#).

Related Pathway: MAPK, Chromatin/Transcription

Note: For western blotting, incubate membrane with diluted antibody in 5% nonfat milk, 1X TBS, 0.1% Tween-20 at 4°C with gentle shaking, overnight.

This product is for in vitro research use only and is not intended for use in humans or animals.