

#11029

ATF2 (Phospho-Ser62 or 44) Antibody

Catalog: #11029-1 50µl **Orders:** order@signalwayantibody.com
#11029-2 100µl **Support:** tech@signalwayantibody.com
Storage: Store at -20°C/1 year **Web:** www.signalwayantibody.com



Application	Species Reactivity	Source	Molecular Wt.
WB IHC	Human Mouse Rat	Rabbit Polyconal Ab	65-75 KD

Description: Antibodies were produced by immunizing rabbits with synthetic phosphopeptide and KLH conjugates. Antibodies were purified by affinity-chromatography using epitope-specific phosphopeptide. Non-phospho specific antibodies were removed by chromatography using non-phosphopeptide.

Specificity: The antibody detects endogenous level of ATF-2 only when phosphorylated at serine 62 or 44.

Immunogen: Peptide sequence around phosphorylation site of serine 62 or 44 (N-D-S(p)-V-I) derived from Human ATF2.

Formulation: Supplied at 1.0mg/mL in phosphate buffered saline (without Mg²⁺ and Ca²⁺), pH 7.4, 150mM NaCl, 0.02% sodium azide and 50% glycerol.

Synonyms: CREB2 CREBP1

Accession No.: Swiss-Prot#:P15336 NCBI Gene#: 1386
NCBI Protein#: NP_001871.2

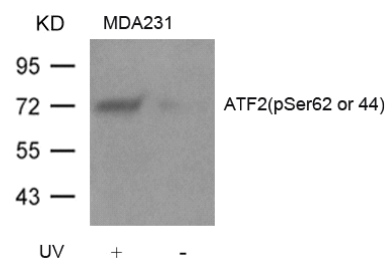
Background: Transcriptional activator, probably constitutive, which binds to the cAMP-responsive element (CRE) (consensus: 5'-GTGACGT[AC][AG]-3'), a sequence present in many viral and cellular promoters. Interaction with JUN redirects JUN to bind to CREs preferentially over the 12-O-tetradecanoylphorbol-13-acetate response elements (TRES) as part of an ATF2-c-Jun complex.

References:

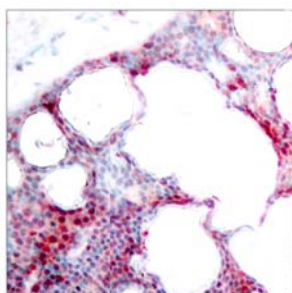
- Sevilla A, et al. (2004) J Biol Chem. 279(26):27458-27465.
Sakurai A, et al. (1991) Biochem Biophys Res Commun. 181(2): 629-635.
Abdel-Hafiz H A, et al. (1992) Mol Endocrinol. 6: 2079-2089.
Gupta S, et al. (1995) Science. 267: 389-393.
Van Dam H, et al. (1995) EMBO J. 14(8): 1798-1811.

Recommended Dilutions:

Western blotting 1:500~1:1000
Immunohistochemistry 1:50~1:100



Western blot analysis of extracts from MDA231 cells untreated or treated with UV using ATF2 (Phospho-Ser62 or 44) Antibody #11029.



Immunohistochemical analysis of paraffin-embedded human breast carcinoma tissue using ATF2 (Phospho-Ser62 or 44) Antibody #11029.

Citation: If you publish research using #11029 please [let us know](#).

Related Pathway: MAPK, Chromatin/Transcription

Note: For western blotting, incubate membrane with diluted antibody in 5% nonfat milk, 1X TBS, 0.1% Tween-20 at 4°C with gentle shaking, overnight.

This product is for in vitro research use only and is not intended for use in humans or animals.