

#11023

c-Jun (Phospho-Tyr170) Antibody

Catalog: #11023-1 50µl **Orders:** order@signalwayantibody.com
#11023-2 100µl **Support:** tech@signalwayantibody.com
Storage: Store at -20°C/1 year **Web:** www.signalwayantibody.com



| Application | Species Reactivity | Source | Molecular Wt. |
|-------------|--------------------|---------------------|---------------|
| WB | Human Mouse Rat | Rabbit Polyconal Ab | 43KD |

Description: Antibodies were produced by immunizing rabbits with synthetic phosphopeptide and KLH conjugates. Antibodies were purified by affinity-chromatography using epitope-specific phosphopeptide. Non-phospho specific antibodies were removed by chromatography using non-phosphopeptide.

Specificity: The antibody detects endogenous level of c-Jun only when phosphorylated at tyrosine 170.

Immunogen: Peptide sequence around phosphorylation site of tyrosine 170 (P-V-Y(p)-A-N) derived from Human c-Jun.

Formulation: Supplied at 1.0mg/mL in phosphate buffered saline (without Mg²⁺ and Ca²⁺), pH 7.4, 150mM NaCl, 0.02% sodium azide and 50% glycerol.

Synonyms: AH119 AP1 Jun A c-Jun p39

Accession No.: Swiss-Prot#: P05412 NCBI Gene#: 3725
NCBI Protein#: NP_002219.1

Background: Transcription factor that recognizes and binds to the enhancer heptamer motif 5'-TGA[CG]TCA-3'.

References:

Barila D, et al. (2000) EMBO J. 19(2): 273-281.
Binetruy B, et al. (1991) Nature. 351: 122-127.
Smeal T, et al. (1991) Nature. 354:494-496.
Derijard B, et al. (1994) Cell. 76:1025-1037.
Kyriakis J M, et al. (1994) Nature. 369: 156-160.

Citation:

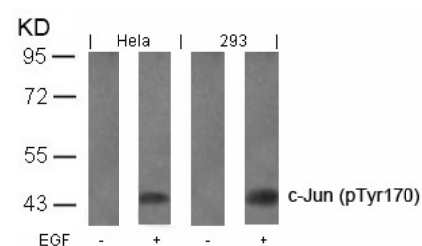
If you publish research using #11023 please [let us know](#).

Related Pathway: MAPK, Chromatin/Transcription

Note: For western blotting, incubate membrane with diluted antibody in 5% nonfat milk, 1X TBS, 0.1% Tween-20 at 4°C with gentle shaking, overnight.

Recommended Dilutions:

Western blotting 1:500~1:1000



Western blot analysis of extracts from HeLa and 293 cells untreated or treated with EGF using c-Jun (Phospho-Tyr170) Antibody #11023.