

#11007

GSK3 α (Phospho-Ser21) Antibody

Catalog: #11007-1 50 μ l **Orders:** order@signalwayantibody.com
#11007-2 100 μ l **Support:** tech@signalwayantibody.com
Storage: Store at -20°C/1 year **Web:** www.signalwayantibody.com



Application	Species Reactivity	Source	Molecular Wt.
WB IHC IF	Human Mouse Rat	Rabbit Polyconal Ab	51KD

Description: Antibodies were produced by immunizing rabbits with synthetic phosphopeptide and KLH conjugates. Antibodies were purified by affinity-chromatography using epitope-specific phosphopeptide. Non-phospho specific antibodies were removed by chromatography using non-phosphopeptide.

Specificity: The antibody detects endogenous level of GSK3 α only when phosphorylated at serine 21 and does not detect GSK-3 β when phosphorylated at Ser9.

Immunogen: Peptide sequence around phosphorylation site of serine 21 (T-S-S(p)-F-A) derived from Human GSK3 α .

Formulation: Supplied at 1.0mg/mL in phosphate buffered saline (without Mg²⁺ and Ca²⁺), pH 7.4, 150mM NaCl, 0.02% sodium azide and 50% glycerol.

Synonyms: Factor A GSK-3 alpha kinase GSK3-alpha

Accession No.: Swiss-Prot#: P49840 NCBI Gene#: 2931
NCBI Protein#: NP_063937.2

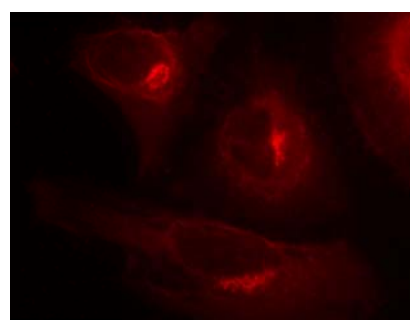
Background: Implicated in the hormonal control of several regulatory proteins including glycogen synthase, MYB and the transcription factor JUN.

References:

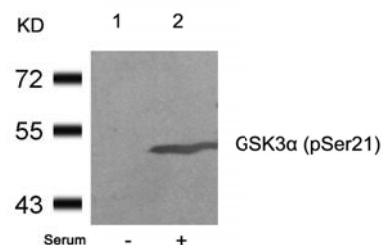
Barry FA, et al. (2003) FEBS Lett. 553(1-2): 173-178.
Koivisto L, et al. (2003) J Cell Sci. 116(Pt 18): 3749-3760.
Welsh G I, et al. (1996) Trends Cell Biol. 6:274-279.
Srivastava A K, et al. (1998) Mol. Cell. Biochem. 182: 135-141.

Recommended Dilutions:

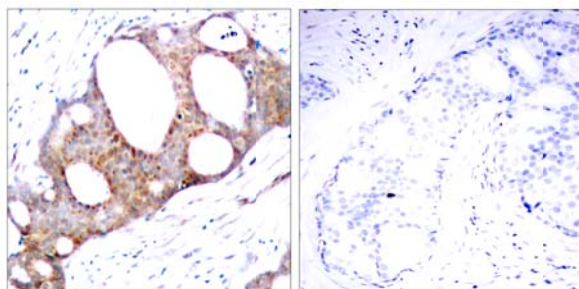
Western blotting 1:500~1:1000
Immunohistochemistry 1:50~1:100
Immunofluorescence 1:100~1:200



Immunofluorescence staining of methanol-fixed HeLa cells showing cytoplasmic staining using GSK3 α (Phospho-Ser21) Antibody #11007.



Western blot analysis of extracts from 293 cells untreated (lane 1) or treated with serum (lane 2) using GSK3 α (Phospho-Ser21) Antibody #11007.



Immunohistochemical analysis of paraffin-embedded human breast carcinoma tissue using GSK3 α (Phospho-Ser21) Antibody #11007 (left) or the same antibody preincubated with blocking peptide (right).

Citation: If you publish research using #11007 please [let us know](#).

Related Pathway: Cancer/Apoptosis, Akt, CellCycle, Insulin/Glucose, Wnt/beta-catenin, NF-kappa B, Kinase/Phosphatases

Note: For western blotting, incubate membrane with diluted antibody in 5% nonfat milk, 1X TBS, 0.1% Tween-20 at 4°C with gentle shaking, overnight.

This product is for in vitro research use only and is not intended for use in humans or animals.