

#11002

## GSK3 $\beta$ (Phospho-Ser9) Antibody

**Catalog:** #11002-1 50 $\mu$ l **Orders:** [order@signalwayantibody.com](mailto:order@signalwayantibody.com)  
#11002-2 100 $\mu$ l **Support:** [tech@signalwayantibody.com](mailto:tech@signalwayantibody.com)  
**Storage:** Store at -20°C/1 year **Web:** [www.signalwayantibody.com](http://www.signalwayantibody.com)



| Application | Species Reactivity | Source              | Molecular Wt. |
|-------------|--------------------|---------------------|---------------|
| WB IHC IF   | Human Mouse Rat    | Rabbit Polyconal Ab | 46KD          |

**Description:** Antibodies were produced by immunizing rabbits with synthetic phosphopeptide and KLH conjugates. Antibodies were purified by affinity-chromatography using epitope-specific phosphopeptide. Non-phospho specific antibodies were removed by chromatography using non-phosphopeptide.

**Specificity:** The antibody detects endogenous level of GSK3 $\beta$  only when phosphorylated at serine 9.

**Immunogen:** Peptide sequence around phosphorylation site of serine 9 (T-T-S(p)-F-A) derived from Human GSK3 $\beta$ .

**Formulation:** Supplied at 1.0mg/mL in phosphate buffered saline (without Mg<sup>2+</sup> and Ca<sup>2+</sup>), pH 7.4, 150mM NaCl, 0.02% sodium azide and 50% glycerol.

**Synonyms:** Factor A GSK-3 beta Protein kinase GSK-3-beta kinase GSK-3 beta

**Accession No.:** Swiss-Prot#: P49841 NCBI Gene#: 2932  
NCBI Protein#: NP\_001139628.1

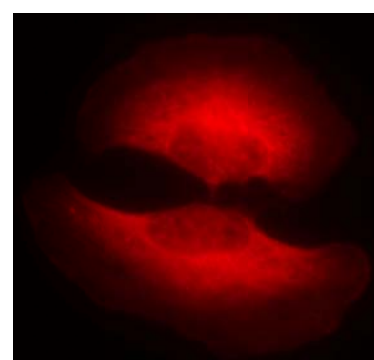
**Background:** Participates in the Wnt signaling pathway. Implicated in the hormonal control of several regulatory proteins including glycogen synthase, MYB and the transcription factor JUN. Phosphorylates JUN at sites proximal to its DNA-binding domain, thereby reducing its affinity for DNA. Phosphorylates MUC1 in breast cancer cells, and decreases the interaction of MUC1 with CTNNB1/beta-catenin. Phosphorylates CTNNB1/beta-catenin.

### References:

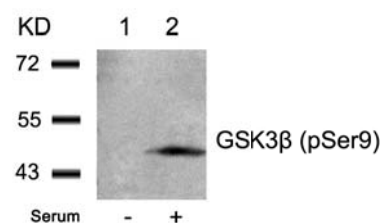
Fan G, et al. (2003) J Biol Chem. 278(52): 52432-52436.  
Barry FA, et al. (2003) FEBS Lett. 553(1-2): 173-178.  
Welsh, et al. (1996) Trends Cell Biol. 6: 274-279.  
Srivastava A K, et al. (1998) Mol Cell Biochem. 182: 135-141.

### Recommended Dilutions:

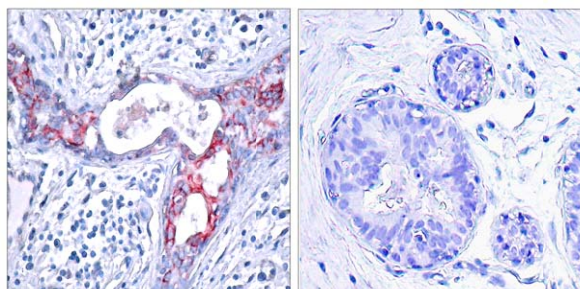
Western blotting 1:500~1:1000  
Immunohistochemistry 1:50~1:100  
Immunofluorescence 1:100~1:200



Immunofluorescence staining of methanol-fixed HeLa cells showing cytoplasmic staining using GSK3 $\beta$  (Phospho-Ser9) Antibody #11002.



Western blot analysis of extracts from 293 cells untreated (lane 1) or treated with serum (lane 2) using GSK3 $\beta$  (Phospho-Ser9) Antibody #11002.



Immunohistochemical analysis of paraffin-embedded human breast carcinoma tissue using GSK3 $\beta$  (Phospho-Ser9) Antibody #11002 (left) or the same antibody preincubated with blocking peptide (right).

### Citation:

If you publish research using #11002 please [let us know](#).

**Related Pathway:** Akt, CellCycle, Insulin/Glucose, NF-kappa B, Kinase/Phosphatases, Wnt/beta-catenin, Translation

**Note:** For western blotting, incubate membrane with diluted antibody in 5% nonfat milk, 1X TBS, 0.1% Tween-20 at 4°C with gentle shaking, overnight.

This product is for in vitro research use only and is not intended for use in humans or animals.